

Technical data sheet

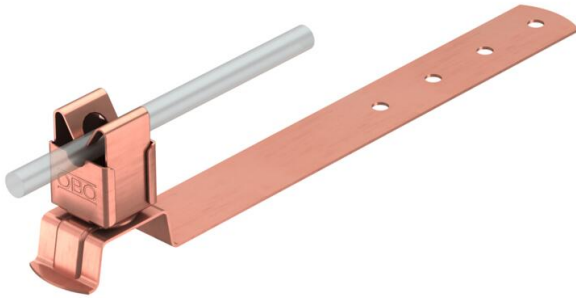
Roof conductor holder for tiled roofs, Rd 8

Item number: 5216206



157/F...: Roof conductor holder for tiled roofs

- Bottom section and conductor holder, high-grade stainless steel (V2A)
- For round conductor Rd 8
- Including drill hole in bottom section for quick installation



Cu Copper

Master data

Item number	5216206
Type	157 F-CU 280
Description 1	Roof conductor holder
Manufacturer	OBO
Dimension	8mm
Material	Copper
Smallest sales unit	10
Unit of quantity	Piece
Weight	11.1 kg
Weight unit	kg/100 pc.
CO2 Footprint (GWP) Cradle-to-Gate	0,2308 kg CO2e / 1 Piece

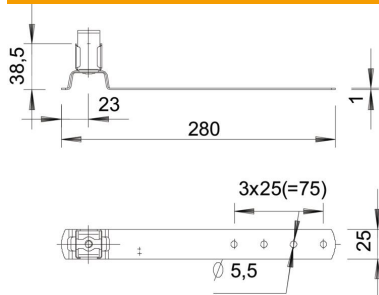
Technical data sheet

Roof conductor holder for tiled roofs, Rd 8

Item number: 5216206



Dimensions



Length	280 mm
Dimension L	280 mm

Technical data

Application	Roof surface
Conductor fastening type	With clip
Conductor diameter, max.	8
Conductor diameter, min.	8
Mounting type	Screw-on
Mounting height	38.5 mm
Fit	Rd 8 mm
Material of the holder	Copper
Material of the support	Copper