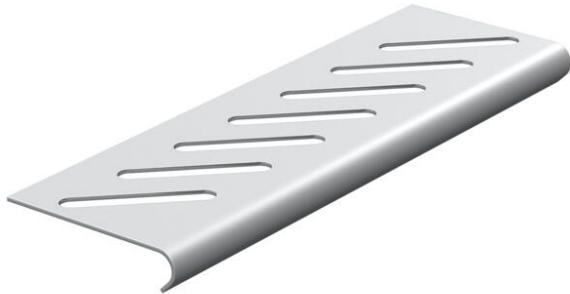


Technical data sheet

Bottom end plate A2

Item number: 7084080



For base reinforcement at the ends of the tray and as cable protection.
For fastening, please order screws, type FRSB M6x12, separately.



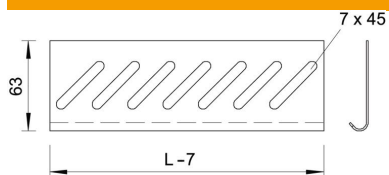
A2 Stainless steel

2B Bright, treated

Master data

Item number	7084080
Type	BEB 400 A2
Description 1	Bottom end plate
Description 2	for cable tray
Manufacturer	OBO
Dimension	B400mm
Colour	stainless steel
Material	Stainless steel 1.4301
Surface	Bright, treated
Surface standard	
Smallest sales unit	1
Unit of quantity	Piece
Weight	18.9 kg
Weight unit	kg/100 pc.
CO2 Footprint (GWP) Cradle-to-Gate	1,3359 kg CO2e / 1 Piece

Dimensions



Width	400 mm
Height	35 mm
Dimension B	400 mm

Technical data

Maintain electrical functions	no
Rustproof steel, pickled	no
Wide-span version	no