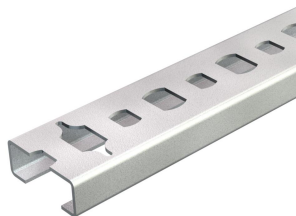


Technical data sheet

CL2008 profile rail, slot 11 mm, perforated, breakable

Item number: 1106023



Light-duty C profile rail for cable routing, in conjunction with series clips or clamp clips with N foot. Can also be used in building of control cabinets. Perforated, on "A" can be broken every 10 cm.



St Steel

BK Bright

Master data

Item number	1106023
Type	CL2008BP2000BK
Description 1	Profile rail
Description 2	perforated, slot 11mm
Manufacturer	OBO
Dimension	2000x20x8
Material	Steel
Surface	Bright
Surface standard	
Smallest sales unit	2
Unit of quantity	Metre
Weight	20 kg
Weight unit	kg/100 m
CO2 Footprint (GWP) Cradle-to-Gate	0,4447 kg CO2e / 1 Meter

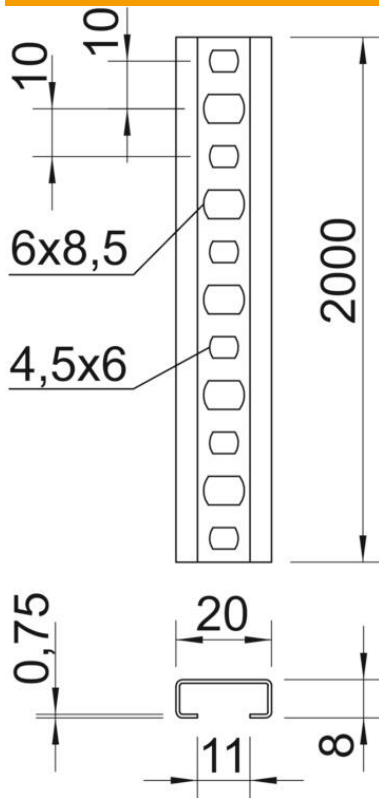
Technical data sheet

CL2008 profile rail, slot 11 mm, perforated, breakable



Item number: 1106023

Dimensions



Length	2,000 mm
Width	20 mm
Height	8 mm
Dimension L	2,000 mm

Technical data

Breakable	yes
Type of perforation	Perforated back
Version for	Single profile
Drill hole spacing, centre	10 mm
Bundle	50 m
Maintain electrical functions	no
Material thickness	0.75 mm
With perforation	yes
With tothing	no
Profile shape	C profile
Slot width	11 mm
Static value A	0.24 cm ²
Static value Iy	0.02 cm ⁴
Static value Iz	0.17 cm ⁴
Static value Wy	0.02 cm ³
Static value Wz	0.17 cm ³