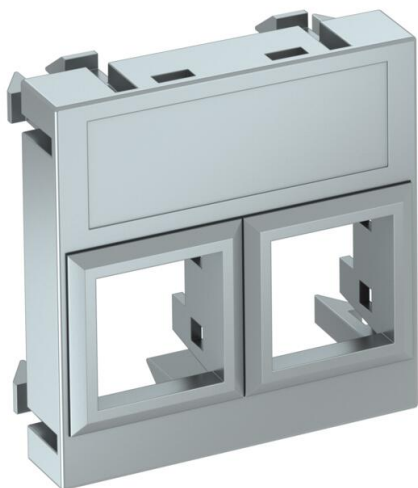


Technical data sheet

Data technology support, 1 module, straight outlet, type LE

Item number: 6119308



Data technology support with straight outlet and without a locking slider to accept two data technology connection modules with RJ45 socket. The locking fastening is suitable for horizontal and vertical installation in the system environment. Type LE has a special module seat and is designed for indirect fastening of the data connection modules in the mounting opening.

The type LE data technology support is suitable for accepting the following data connection modules: LexCom/Schneider: LexCom 125, LexCom 250 and LexCom 500.

For installation in Rapid 45 and Rapid 80 device installation trunking, ISS service poles and underfloor systems.

PC Polycarbonate

Master data

| | |
|------------------------------------|--------------------------------|
| Item number | 6119308 |
| Type | DTG-02LE AL1 |
| Description 1 | Data technology support |
| Description 2 | f.2 connection modules type LE |
| Manufacturer | OBO |
| Dimension | 45x45mm |
| Colour | Aluminium painted |
| Material | Polycarbonate |
| Smallest sales unit | 1 |
| Unit of quantity | Piece |
| Weight | 0.9 kg |
| Weight unit | kg/100 pc. |
| CO2 Footprint (GWP) Cradle-to-Gate | 0,0208 kg CO2e / 1 Piece |

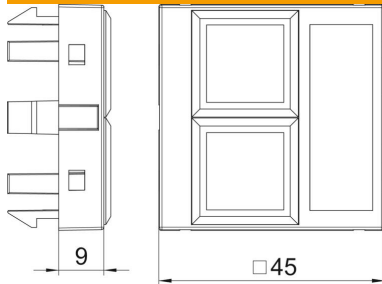
Technical data sheet

Data technology support, 1 module, straight outlet, type LE

Item number: 6119308



Dimensions



| | |
|--------|-------|
| Width | 45 mm |
| Height | 45 mm |

Technical data

| | |
|----------------------|--|
| Surface version | Matt |
| Fastening type | Lock |
| Labelling panel | With labelling panel |
| Halogen-free | yes |
| Hinged cover | no |
| Lamp-wire connector | no |
| With printed label | no |
| With dust protection | no |
| Mounting opening | Type LE |
| Protection rating | IP20 |
| Depth | 9 mm |
| Support ring | no |
| Transparent | no |
| Use | Installable data connector |
| Strain relief option | no |
| Combination | Basic element with central cover plate |