

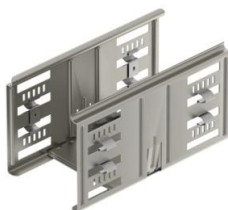
Technical data sheet

Magic straight connector set A2

Item number: 6069134



Cable tray connector with quick fastening for the screwless connection of perforated cable trays with a side height of 110 mm.
The optimised design means that the connector can be used to create radii and as a length compensation piece for large temperature deviations.



A2 Stainless steel

2B Bright, treated

Master data

Item number	6069134
Type	KTSMV 110 A2
Description 1	Straight connector set
Description 2	for cable tray Magic
Manufacturer	OBO
Dimension	110x100x200
Colour	stainless steel
Material	Stainless steel 1.4301
Surface	Bright, treated
Surface standard	
Smallest sales unit	1
Unit of quantity	Piece
Weight	44.1 kg
Weight unit	kg/100 pc.
CO2 Footprint (GWP) Cradle-to-Gate	3,3379 kg CO2e / 1 Piece

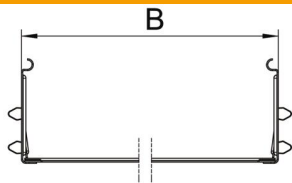
Technical data sheet

Magic straight connector set A2

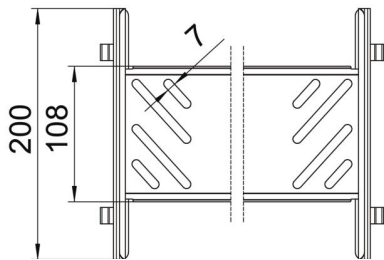
Item number: 6069134



Dimensions



Length	200 mm
Width	100 mm
Height	110 mm
Plate thickness	1 mm
Dimension B	100 mm



Technical data

Version for	Straight connector
Maintain electrical functions	no
Suitable for mesh cable tray	no
Suitable for cable ladder	no
Suitable for cable tray	yes
Suitable for cable tray system height	110 mm
Adjustable connector, horizontal	no
Articulated connector, vertical	no
Rustproof steel, pickled	no
Connection type	Screwless connector