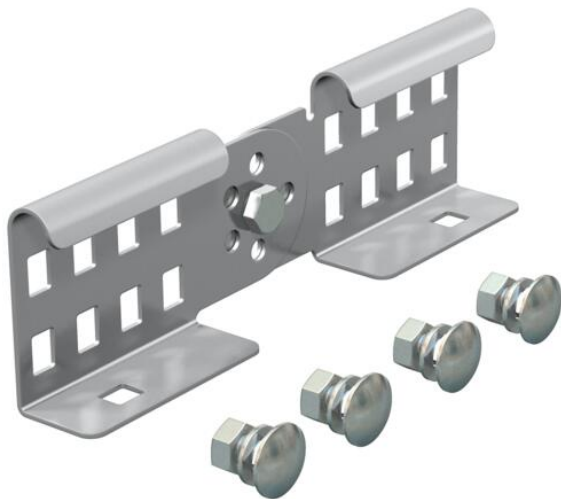


Technical data sheet

Adjustable connector A2

Item number: 6208947



Adjustable connector as external connector to join cable ladders and fittings with a side height of 60 mm and continuous rail perforation. Angle can be adjusted vertically.
The bolt fastening ensures the continuity of the equipotential bonding.



A2 Stainless steel

2B Bright, treated

Master data

| | |
|------------------------------------|--------------------------|
| Item number | 6208947 |
| Type | LGVG 60 A2 |
| Description 1 | Adjustable connector |
| Description 2 | for cable ladder |
| Manufacturer | OBO |
| Dimension | 64x210 |
| Colour | stainless steel |
| Material | Stainless steel 1.4301 |
| Surface | Bright, treated |
| Surface standard | |
| Smallest sales unit | 10 |
| Unit of quantity | Piece |
| Weight | 28.5 kg |
| Weight unit | kg/100 pc. |
| CO2 Footprint (GWP) Cradle-to-Gate | 1,8803 kg CO2e / 1 Piece |

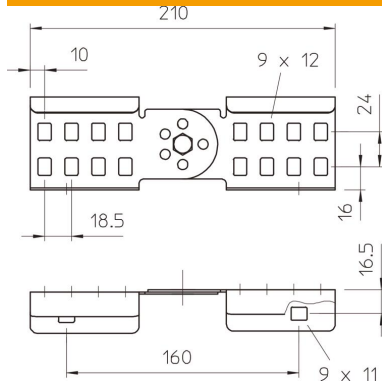
Technical data sheet

Adjustable connector A2

Item number: 6208947



Dimensions



| | |
|-----------------|--------|
| Dimension | 64x210 |
| Length | 210 mm |
| Width | 28 mm |
| Height | 60 mm |
| Plate thickness | 1.5 mm |

Technical data

| | |
|---------------------------------------|------------------------------|
| Version for | Straight and angle connector |
| Suitable for mesh cable tray | no |
| Suitable for cable ladder | yes |
| Suitable for cable tray | no |
| Suitable for cable tray system height | 60 mm |
| Adjustable connector, horizontal | no |
| Articulated connector, vertical | yes |
| Rustproof steel, pickled | no |
| Connection type | Screw connector |