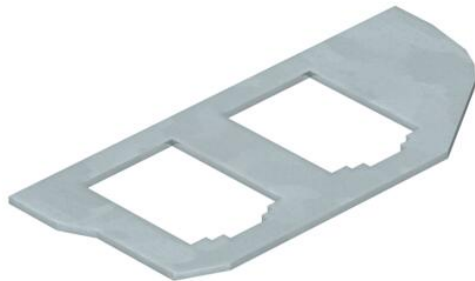


Technical data sheet

Mounting plate for the installation of data sockets in GESRM2, 2 x type B Item number: 7407622



Mounting plate to accept two connection modules for data connection modules of the following types BTR: E-DAT; Dätwyler: MS and MS-N; Kerpen: VarioKeystone.

Dimensions of a mounting opening in mm: 19.35/21.55 x 14.85.

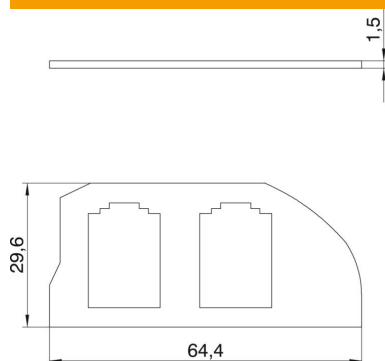


A2 Stainless steel

Master data

Item number	7407622
Type	MPRM2 2B
Description 1	Mounting plate
Description 2	with 2x hole pattern Type B
Manufacturer	OBO
Dimension	19,35x14,85
Material	Stainless steel 1.4301
Smallest sales unit	1
Unit of quantity	Piece
Weight	1.3 kg
Weight unit	kg/100 pc.
CO2 Footprint (GWP) Cradle-to-Gate	0,456 kg CO2e / 1 Piece

Dimensions



Length	64.4 mm
Width	29.6 mm
Height	1.5 mm

Technical data sheet

Mounting plate for the installation of data sockets in
GESRM2, 2 x type B
Item number: 7407622



Technical data

Number of CEE/Perilex openings	0
Number of triple openings	0
Number of installable devices	2
Number of single openings	2
No. of entries	0
Number of oval openings	0
Number of square openings	0
Number of round openings	0
Number of strain reliefs	0
Number of double openings	0
Version for	Support shape
Fastening type	Lockable
Labelling panel	no
Blanking lid	no
Floor covering protection frame	no
Floor plate	no
Lowerable to be flush-floor	no
Seal installation option	no
Installation opening for on-floor tank	no
Decouplable	no
Suitable for labelling panel	no
Suitable for raised floor installation	yes
Suitable for screed-flush closed underfloor ducts	yes
Suitable for screed-covered underfloor ducts	yes
Suitable for cavity floor installation	yes
Suitable for wet care	yes
Suitable for underfloor ducts	yes
Device type	Miscellaneous
Installation technology	Miscellaneous
With floor covering recess	no
Heavy-duty version	no
Depth	1.5 mm
Strain relief option	yes
suitable for data connection module	Type B