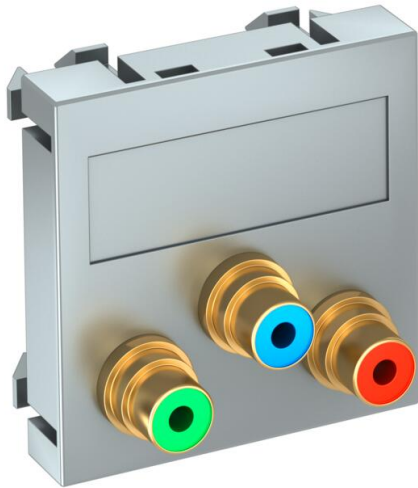


Technical data sheet

Component video connection, 1 module, straight outlet, as soldered connection, aluminium-painted
Item number: 6105120



Multimedia support with three cinch connection sockets for component video, straight cable outlet, with labelling panel, three cinch sockets (RCA) with soldered connection, colour coding red / green / blue. Support plate with locking fastening, suitable for horizontal and vertical installation in the system environment.

PC Polycarbonate

Master data

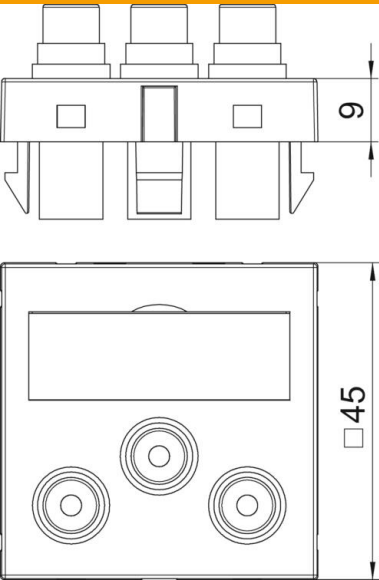
| | |
|------------------------------------|--------------------------------|
| Item number | 6105120 |
| Type | MTG-3R L AL1 |
| Description 1 | Multimedia support video cinch |
| Description 2 | 3xsocket with sold. connection |
| Manufacturer | OBO |
| Dimension | 45x45mm |
| Colour | Aluminium painted |
| Material | Polycarbonate |
| Smallest sales unit | 1 |
| Unit of quantity | Piece |
| Weight | 3.2 kg |
| Weight unit | kg/100 pc. |
| CO2 Footprint (GWP) Cradle-to-Gate | 0,0443 kg CO2e / 1 Piece |

Technical data sheet

Component video connection, 1 module, straight outlet, as soldered connection, aluminium-painted
Item number: 6105120



Dimensions



Technical data

| | |
|----------------------|--|
| Number of units | 1 |
| Surface version | Matt |
| Fastening type | Lock |
| Halogen-free | yes |
| Hinged cover | no |
| Lamp-wire connector | no |
| With printed label | no |
| With dust protection | no |
| Protection rating | IP20 |
| Support ring | no |
| Transparent | no |
| Use | Cinch |
| Strain relief option | no |
| Combination | Basic element with central cover plate |