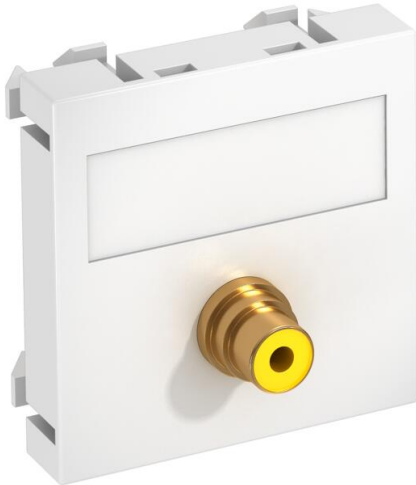


Technical data sheet

Video cinch connection, 1 module, straight outlet, as soldered connection, pure white
Item number: 6104970



Multimedia support with one cinch connection socket for composite video, straight cable outlet, with labelling panel, cinch socket (RCA) with soldered connection, colour coding yellow. Support plate with locking fastening, suitable for horizontal and vertical installation in the system environment.

PC Polycarbonate

Master data

Item number	6104970
Type	MTG-R L RW1
Description 1	Multimedia support video cinch
Description 2	1xsocket with sold. connection
Manufacturer	OBO
Dimension	45x45mm
Colour	Pure white; RAL 9010
Material	Polycarbonate
Smallest sales unit	1
Unit of quantity	Piece
Weight	1.5 kg
Weight unit	kg/100 pc.
CO2 Footprint (GWP) Cradle-to-Gate	0,0961 kg CO2e / 1 Piece

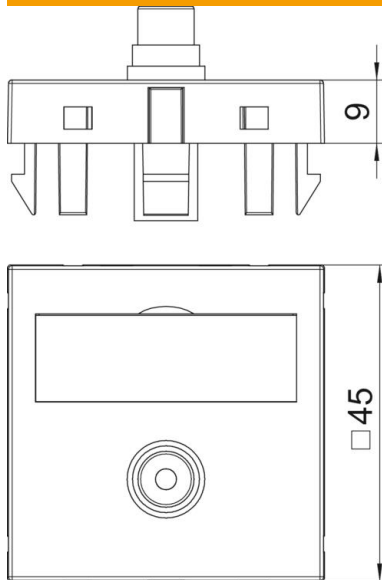
Technical data sheet

Video cinch connection, 1 module, straight outlet, as soldered connection, pure white

Item number: 6104970



Dimensions



Technical data

Number of units	1
Surface version	Matt
Fastening type	Lock
Halogen-free	yes
Hinged cover	no
Lamp-wire connector	no
With printed label	no
With dust protection	no
Protection rating	IP20
Support ring	no
Transparent	no
Use	Cinch
Strain relief option	no
Combination	Basic element with central cover plate