

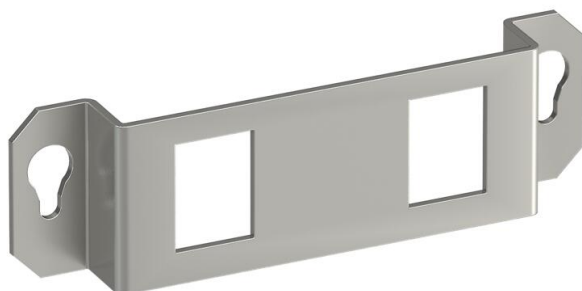
Technical data sheet

Mounting support, 2 x type C

Item number: 7407843



Mounting support to accept two data connection modules of the following types:
Brand-Rex: shielded; EKU: E-Stone; Dätwyler: KS-T, MS-K and KU-T module;
R&M: Snap-In and Keystone; Rutenbeck: UM and UMflex; SETEC: MKJ, UKJ
and XKJ; Siemon TERA; Telegärtner: AMJ and UMJ.
Dimensions of a mounting opening in mm: 19.30 x 14.80.
Suitable for GE2F installation unit with tube body.



A2 Stainless steel

Master data

Item number	7407843
Type	MTGE2F 2C
Description 1	Mounting plate for GE2F
Description 2	with 2x hole pattern Type C
Manufacturer	OBO
Material	Stainless steel
Smallest sales unit	1
Unit of quantity	Piece
Weight	0.38 kg
Weight unit	kg/100 pc.

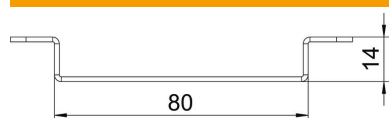
Technical data sheet

Mounting support, 2 x type C

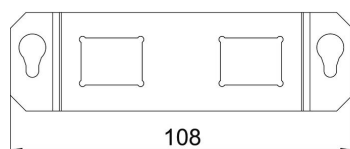
Item number: 7407843



Dimensions



Length	108 mm
Width	108 mm



Technical data

Number of installable devices	2
Number of strain reliefs	0
Version for	Support shape
Fastening type	Lockable
Labelling panel	no
Floor covering protection frame	no
Floor plate	no
Lowerable to be flush-floor	no
Seal installation option	no
Installation opening for on-floor tank	no
Decouplable	no
Suitable for raised floor installation	yes
Suitable for screed-flush closed underfloor ducts	yes
Suitable for screed-covered underfloor ducts	yes
Suitable for cavity floor installation	yes
Suitable for underfloor ducts	yes
With floor covering recess	no
Accessory mounting type	Bolts
Heavy-duty version	no
Depth	14 mm
Strain relief option	yes