

Technical data sheet

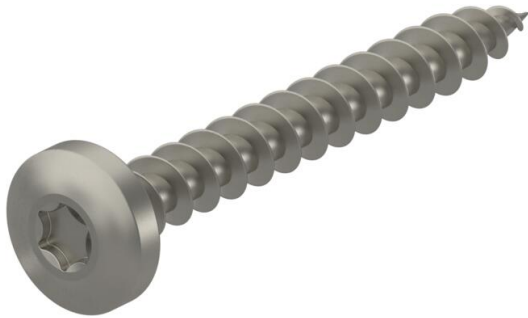
Chipboard screw, with Torx, panhead, stainless steel

Item number: 3191006



Stainless steel wood screw with lens head and Torx drive for fastenings in interior and exterior areas.

Areas of use: Wood, chipboard, plasterboard panels and plastic anchors.



A4 Stainless steel

2B Bright, treated

Master data

Item number	3191006
Type	OTSP 4,0x25 A4
Description 1	Chipboard screw
Description 2	panhead, TX 20 drive
Manufacturer	OBO
Dimension	4x25mm
Material	Stainless steel
Surface	Bright, treated
Surface standard	
Smallest sales unit	100
Unit of quantity	Piece
Weight	0.185 kg
Weight unit	kg/100 pc.

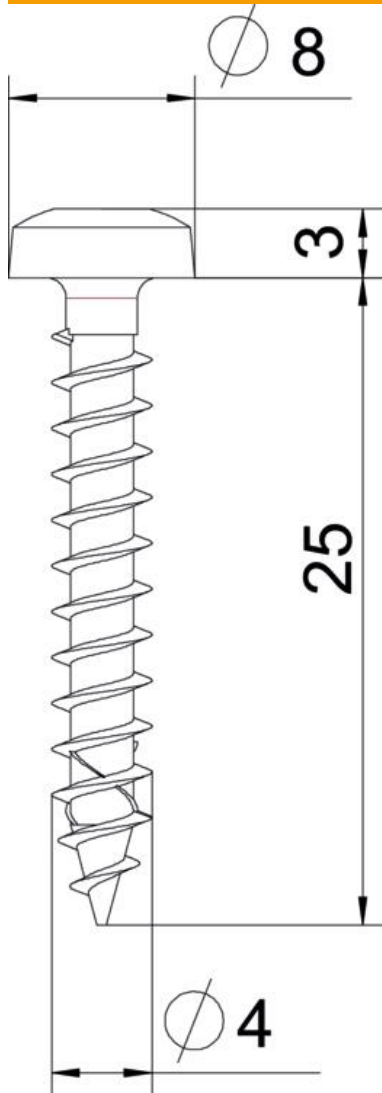
Technical data sheet

Chipboard screw, with Torx, panhead, stainless steel

Item number: 3191006



Dimensions



Length	25 mm
Dimension D	4 mm
Dimension L	25 mm

Technical data

Drive size	TX 20
Hardened	no
Head diameter	8 mm
Head shape	Panhead
Screw system	Torx
Two-compartment	no