

Technical data sheet

PYROLINE® Con D PLC fire protection duct EI90

Item number: 7215810



Fire protection duct made of water and frost-resistant fibreglass lightweight concrete of material class A1 according to EN 13501-1 for fireproof routing of cables in escape and rescue routes. EI60 classification as installation duct according to EN 13501-2 on the basis of tests according to EN 1366-5. When there is an internal fire load (cable fire), the duct prevents the spread of fire from one fire section to another.

Mounting of the duct directly on walls or under ceilings.

Including countersunk head screws and sealing strip.

Including countersunk head screws and sealing strip.



Fibreglass lightweight concrete

Master data

| | |
|---------------------|---------------------------------|
| Item number | 7215810 |
| Type | PLCD D090810 |
| Description 1 | Fire protection duct EI90 |
| Description 2 | Direct installation |
| Manufacturer | OBO |
| Dimension | 1000x100x80 |
| Colour | Grey |
| Material | Fibreglass lightweight concrete |
| Smallest sales unit | 1 |
| Unit of quantity | Metre |
| Weight | 1370 kg |
| Weight unit | kg/100 m |

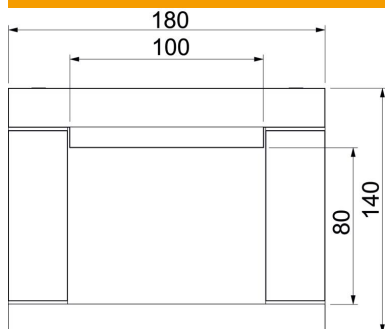
Technical data sheet

PYROLINE® Con D PLC fire protection duct EI90

Item number: 7215810



Dimensions



| | |
|-------------|----------|
| Length | 1,000 mm |
| Dimension B | 180 mm |
| Dimension b | 100 mm |
| Dimension h | 80 mm |
| Dimension H | 140 mm |

Technical data

| | |
|---------------------------------------|----------------------------------|
| Number of flammable sides | 3 |
| Cover fastening | Screw |
| Classification EI – installation duct | 90 |
| With perforation | no |
| Jacketing | Without |
| Material of the insulation | Glass-fibre lightweight concrete |