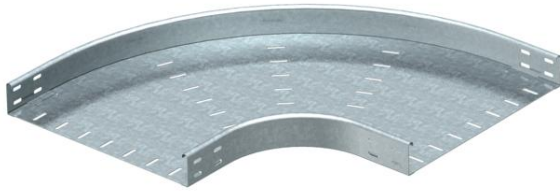


Technical data sheet

90° bend 60 FT

Item number: 7125585



90° bend, horizontal, for all cable tray types of 60 mm side height.
Fitting in round design. The interior radius of the fitting is 150 mm. Fastening materials should be ordered separately.



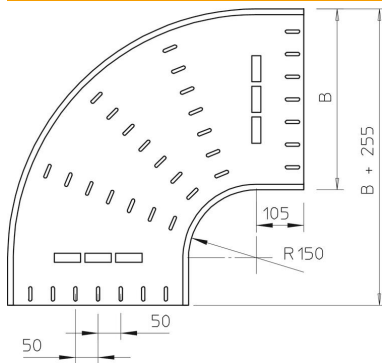
St Steel

FT Hot-dip galvanised

Master data

Item number	7125585
Type	RB 90 660 FT
Description 1	90° bend
Description 2	horizontal, round type
Manufacturer	OBO
Dimension	60x600
Material	Steel
Surface	Hot-dip galvanised
Surface standard	DIN EN ISO 1461
Smallest sales unit	1
Unit of quantity	Piece
Weight	721.5 kg
Weight unit	kg/100 pc.

Dimensions



Width	600 mm
Width	24 in
Height	60 mm
Height	2 in
Dimension B	600 mm
Dimension R	150 mm

Technical data sheet

90° bend 60 FT

Item number: 7125585



Technical data

Bend (angle)	90°
Connector version	Without connectors
Type	Bend, rigid
Maintain electrical functions	no
Mounting perforation in base	no
NATO hole pattern	no
Change of direction	Horizontal
Rustproof steel, pickled	no
Side perforation	no
Wide-span version	no
Type of connector, cable support system	Screwed