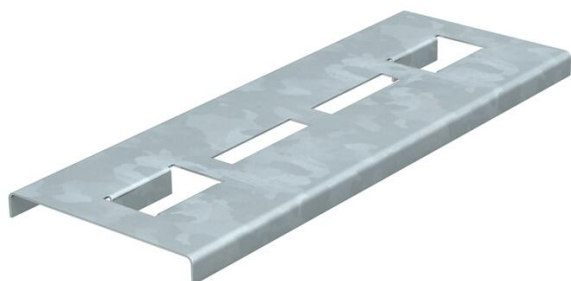


Technical data sheet

Rung support plate for the maintenance of electrical function FS

Item number: 6222951



Rung support plates to increase the support area for the cables in the fittings for routing types with cable ladders for the maintenance of electrical function to DIN 4102 Part 12. Use the support plates to ensure the largest possible support surface in the cable ladder fittings for cables that maintain electrical function in the event of fire. The rung support plates are just laid loosely on the rungs of the cable ladder fittings. The lugs pointing down prevent slippage. For cable ladders with a width of 300 mm

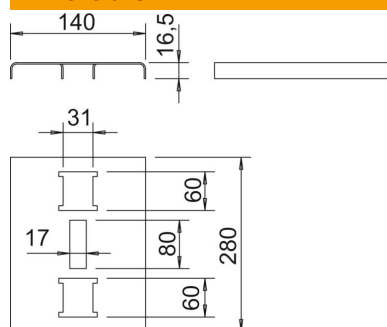


St	Steel
FS	Strip galvanized

Master data

Item number	6222951
Type	SAB30 FS
Description 1	Rung support plate
Description 2	for function maintenance
Manufacturer	OBO
Dimension	280x140x16,5
Colour	zinc
Material	Steel
Surface	Strip galvanized
Surface standard	DIN EN 10346
Smallest sales unit	25
Unit of quantity	Piece
Weight	50 kg
Weight unit	kg/100 pc.
CO2 Footprint (GWP) Cradle-to-Gate	1,5085 kg CO2e / 1 Piece

Dimensions



Width	280 mm
Height	16.5 mm
Dimension a	60 mm
Dimension B	280 mm
Dimension b	80 mm

Technical data sheet

Rung support plate for the maintenance of electrical function FS

Item number: 6222951



Technical data

Maintain electrical functions	yes
Material thickness	1.5 mm
With perforation	yes
Rustproof steel, pickled	no
Wide-span version	no