

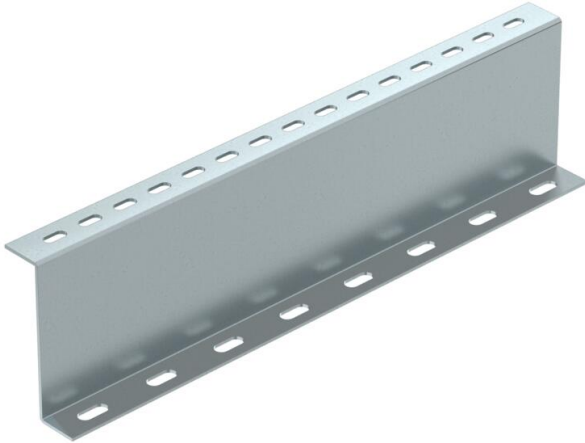
# Technical data sheet

## Support profile 100 FS

Item number: 6044585



Support profile for holding up the walkable cable tray system BKRS from the floor. Installation must be performed on both sides of the Z profile during the process of securing the system so that it is held up.



<b>St</b>	Steel
<b>FS</b>	Strip galvanized

### Master data

Item number	6044585
Type	STP Z 1030 FS
Description 1	Support profile
Description 2	Z type, for BKRS
Manufacturer	OBO
Dimension	100x300
Colour	zinc
Material	Steel
Surface	Strip galvanized
Surface standard	DIN EN 10346
Smallest sales unit	1
Unit of quantity	Piece
Weight	67.2 kg
Weight unit	kg/100 pc.
CO2 Footprint (GWP) Cradle-to-Gate	1,8964 kg CO2e / 1 Piece

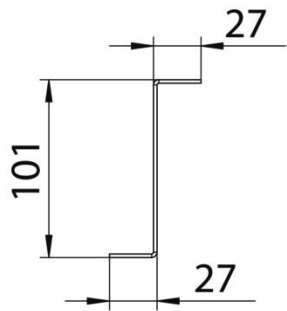
# Technical data sheet

## Support profile 100 FS

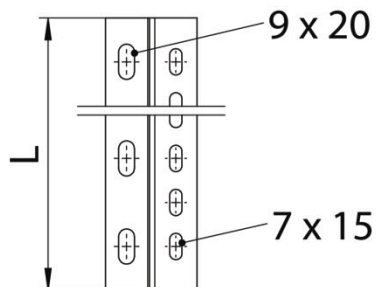
Item number: 6044585



### Dimensions



Length	300 mm
Width	300 mm
Height	100 mm
Dimension L	12 in
Dimension L	300 mm



### Technical data

Material thickness (inches)	0.08 in
Material thickness	2 mm
Rustproof steel, pickled	no