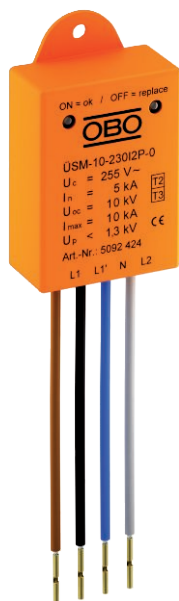


# Technical data sheet

## Surge protection module ÜSM-10-230I2P-0

Item no. 5092424



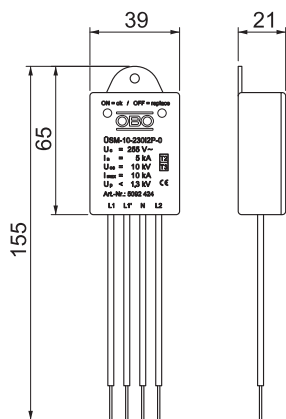
Surge protection module type 2+3 to DIN EN 61643-11 for 230/400 V power grids. Appropriate for the protection of electronic devices and LED drivers.

- For luminaires with 2 phases (power reduction)
- With function display and switch-off of the load circuit when an SPD fails
- Small size for the installation in the pole connection box or upstream of the LED driver
- Protective circuit with a maximum arresting capacity of 10 kA
- Reduction of overvoltage to under 1,300 V (protection level)
- For protection insulated luminaires (PC II) without PE connection

Application: In the cable transition box, junction boxes, cable duct to underfloor systems  
To protect electronic devices such as LED luminaires against surge voltages



### Dimensions



Length	155,00 mm
Width	40,00 mm
Height	21,00 mm

### Master data

Item no.	5092424
Type	ÜSM-10-230I2P-0
Description 1	Surge protective Modul
Description 2	for LED lights with 2 phases
Dimension	230V
Smallest sales unit (VG)	1 Piece
Weight	4,10 kg/100 pc.

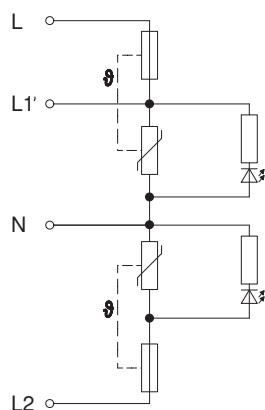
# Technical data sheet

## Surge protection module ÜSM-10-230I2P-0

Item no. 5092424



### Technical data



SPD to EN 61643-11	Type 2+3
SPD to IEC 61643-11	Class II+III
Test class, type 2	<input checked="" type="checkbox"/>
Test class, type 3	<input checked="" type="checkbox"/>
Nominal voltage	230,00 V
Maximum continuous voltage AC	255,00 V
Max. continuous operating voltage	255,00 V
Maximum continuous voltage (L-N)	255,00 V
Maximum continuous voltage (N-PE)	255,00 V
Nominal discharge current (8/20)	5 kA
Nominal discharge current (8/20 µs) [L-N]	5,00 kA
Nominal discharge current (8/20 µs) [N-PE]	5,00 kA
Rated current	16,00 A
Maximum discharge current (8/20 µs)	10,00 kA
Maximum discharge current (8/20 µs) [L-N]	10,00 kA
Maximum discharge current (8/20 µs) [N-PE]	10,00 kA
Protection level	1,3 kV
Protection level [L-N]	1.300,00 kV
Protection level (L-N)	1,3 kV
Response time	< 25 ns
Maximum back-up fuse	16,00 A
Operating temperature range	-40-+80 °C
Pole version	1+N/PE
Version	2-pole without NPE for SK II
Version	1 + NPE
Protection rating	IP20
Protection rating	IP20
Signalling on device	Visual