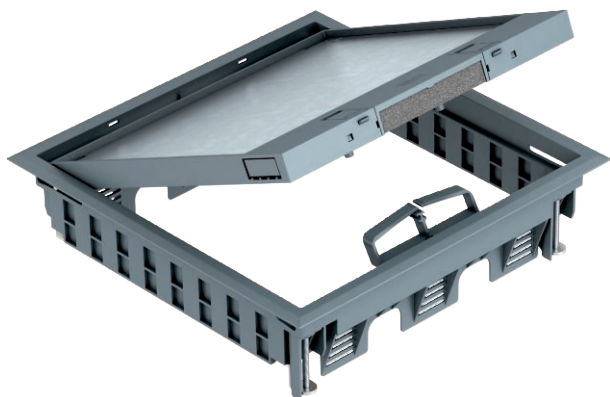


Technical data sheet

GES9-3S service outlet with locking slider

Item no. 7405083



Service outlet with locking slider for up to 12 individual Modul 45 devices in 3 UT4 universal supports, use in trunking systems and system floors for indoor use.
Floor covering recess in the hinged cover pre-adjusted to 5 mm, if necessary adjustable to 10 mm.

Up to 9 installation devices can be used with a 50 mm central plate.

Service outlet with locking slider, 3-compartment, for the installation of MT9 mounting support.
Three type APMT5 cover plates can be installed.

Floor covering recess in the hinged cover pre-adjusted to 5 mm, if necessary adjustable to 10 mm.

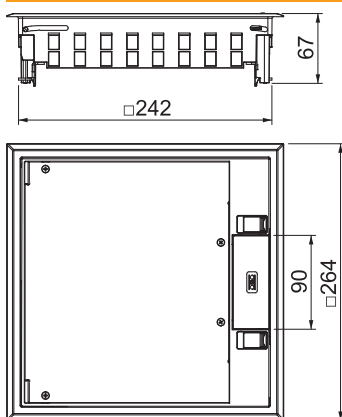


PA Polyamide

Master data

Item no.	7405083
Type	GES9-3S U 7011
Description 1	Service outlet
Description 2	for universal mounting
Dimension	264x264x67
Colour	Iron grey
RAL number	7011
Material	Polyamide
Material symbol	PA
Smallest sales unit (VG)	1 Piece
Weight	199,50 kg/100 pc.

Technical data



Length	264,00 mm
Width	264,00 mm
Height	67,00 mm
Dimension h	73,00 mm
Wide external dimensions	264,00 mm
Wide installation dimensions	244,00 mm
Length of external dimensions	264,00 mm
Length of installation dimensions	244,00 mm
Number of installable devices	12
Number of mounting boxes	3
Cable outlet version	Swivellable cord outlet
Floor covering thickness	10,00 mm
Floor covering protection frame	<input checked="" type="checkbox"/>
Floor care	Dry
Version for	Square
Seal installation option	<input type="checkbox"/>
Installation depth	73,00 mm
Floor height	73 mm
Device support to accept mounting boxes	<input checked="" type="checkbox"/>
Suitable for wet care	<input type="checkbox"/>
Suitable for screed-flush closed underfloor ducts	<input type="checkbox"/>
Suitable for screed-covered underfloor ducts	<input checked="" type="checkbox"/>
Suitable for raised floor installation	<input checked="" type="checkbox"/>

Technical data sheet

GES9-3S service outlet with locking slider

Item no. 7405083



Technical data

Suitable for cavity floor installation	<input checked="" type="checkbox"/>
Suitable for underfloor ducts	<input checked="" type="checkbox"/>
With floor covering recess	<input checked="" type="checkbox"/>
Nominal size for device installation units	9
Suitable for underfloor box	250/350
Opening mechanism	Locking slider
Frame version	Carpet protection frame
Schwerlastausführung	<input type="checkbox"/>
Typ des Einbausystems	UT4
Approvals	