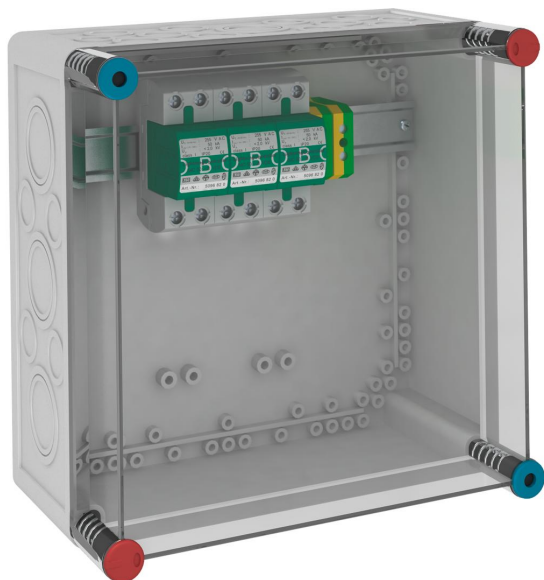


Technical data sheet

VG housing with MC 50-B/3



Item number: 5089212



Lightning arrester system solution type 1 according to DIN EN 61643-11.

- LightningController MC 50-B/VDE mounted in insulating housing IP 65, sealable housing
- Pulse current 100 kA (10/350 μ s) per pole, BET-tested
- Corresponds to the requirements of VDE-AR-N 4100
- Protection level < 2.0 kV
- Encapsulated, non-extinguishing spark gaps
- Suitable for TN-C network systems

Application: Industrial systems and buildings with external lightning protection of the highest Class I to IV.



Master data

Item number	5089212
Type	VG 3-B TNC
Description 1	Housing
Description 2	with 3 lightning arresters
Manufacturer	OBO
Dimension	280V
Smallest sales unit	1
Unit of quantity	Piece
Weight	315 kg
Weight unit	kg/100 pc.

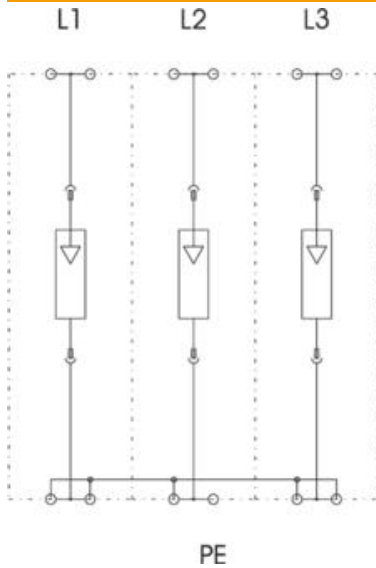
Technical data sheet

VG housing with MC 50-B/3

Item number: 5089212



Technical data



Arrester surge current (8/20 μ s) [total]	150 kA
Response time	<100 ns
Blow-out	no
Version for	3-pole; 255 V
Pole version	3
Structural width in division units (division unit, 17.5 mm)	6
Operating temperature, max.	85 °C
Operating temperature, min.	-40 °C
Lightning surge current (10/350 μ s)	50 kA
Lightning surge current (10/350)	150 kA
Remote signalling	no
Follow current quenching capacity (eff) [N-PE]	25 kA
Follow current quenching capacity leff	12.5
Maximum continuous voltage AC	255
Short-circuit resistance	25 kA
Short-circuit resistance for max. mains-side overcurrent protection	25 kA
Conductor cross-section, rigid (single-wire/multiwire), max.	50 mm ²
Conductor cross-section, rigid (single-wire/multiwire), min.	10 mm ²
Lightning protection zone LPZ	0→1
Max. mains-side overcurrent protection	500
Maximum back-up fuse	500 A
Installation type	Pre-mounted in the housing
Nominal discharge current (8/20 μ s)	50 kA
Nominal voltage AC (50/60 Hz)	230 V
Network form	TN-C
TN network form	yes
TN-C network form	yes
Test class, type 1	yes
Protection rating	IP54
Protection level	≤2,0
Signalling on device	None
SPD to EN 61643-11	Type 1
SPD to IEC 61643-1	Class I