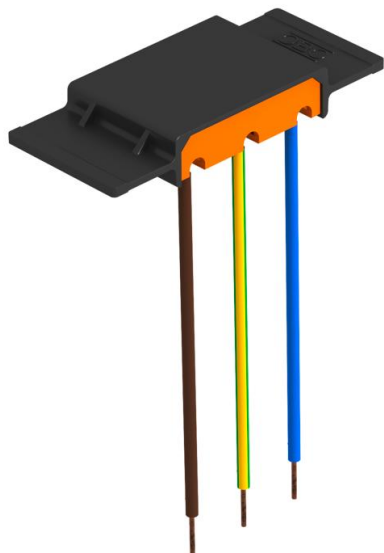


Technical data sheet

Surge protection module 230 V with holder for GB2 and GB3 mounting boxes

Item number: 5092472



Surge protection module type 3 to DIN EN 61643-11 for 230 V power grids.

- With acoustic defect signal
- With low construction height and Y circuit
- With halogen-free plastic (UL 94 V-0)
- Holder with separating retainer function for GB2 / GB3 mounting boxes and UT3 and UT4 universal supports

Application: Universally applicable for all installation systems.
2-pin, 16 A/250 V~, with acoustic defect signal.



Master data

| | |
|---------------------|------------------------|
| Item number | 5092472 |
| Type | ÜSM-A-4 |
| Description 1 | Surge protective Modul |
| Description 2 | with holder |
| Manufacturer | OBO |
| Dimension | 255V |
| Smallest sales unit | 1 |
| Unit of quantity | Piece |
| Weight | 2 kg |
| Weight unit | kg/100 pc. |

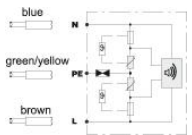
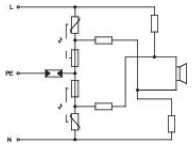
Technical data sheet

Surge protection module 230 V with holder for GB2 and GB3 mounting boxes

Item number: 5092472



Technical data



| | |
|--|--------------------------------------|
| Response time | <25 ns |
| Version for | Incl. holder with partition function |
| Pole version | 1 |
| Operating temperature, max. | 60 °C |
| Operating temperature, min. | -15 °C |
| Combined voltage protection level [L-PE] | 1500 kV |
| Maximum continuous voltage AC | 255 |
| Lightning protection zone LPZ | 2→3 |
| Max. mains-side overcurrent protection | 16 |
| Maximum back-up fuse | 16 A |
| Maximum discharge current (8/20 µs) | 6 kA |
| Installation type | Miscellaneous |
| Nominal discharge current (8/20 µs) | 3 kA |
| Nominal voltage AC (50/60 Hz) | 230 V |
| Network form | Other |
| OBO_Nominal load current (input/output terminal) | 16 A |
| Protection level | ≤1,5 |
| Protection level [L-N] | ≤1500 |
| Protection level [N-PE] | 1.5 kV |
| Protection level wire-earth | 1500 V |
| Signalling on device | Acoustic |
| SPD to EN 61643-11 | Type 3 |
| SPD to IEC 61643-1 | Class III |
| Cable type for surge protection devices | Power cable AV |