

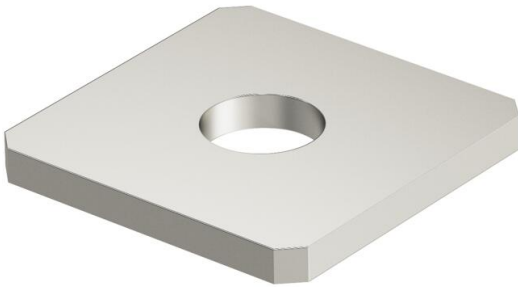
Technical data sheet

Connection plate with 1 hole A2

Item number: 1124683



Connection plate with lengthwise slot, for example for mounting threaded rods to profile rails 41 x 41 mm and 41 x 21 mm.



A2 Stainless steel

2B Bright, treated

Master data

Item number	1124683
Type	GMS 1 VP A2
Description 1	Connection plate
Description 2	with 1 hole
Manufacturer	OBO
Dimension	40x40x4
Material	Stainless steel 1.4301
Surface	Bright, treated
Surface standard	
Smallest sales unit	10
Unit of quantity	Piece
Weight	4.45 kg
Weight unit	kg/100 pc.
CO2 Footprint (GWP) Cradle-to-Gate	0,3236 kg CO2e / 1 Piece

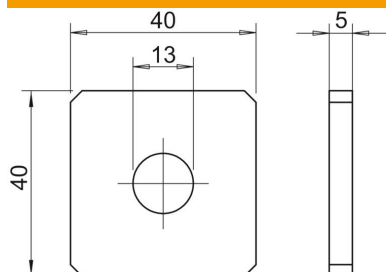
Technical data sheet

Connection plate with 1 hole A2

Item number: 1124683



Dimensions



Length	40 mm
Width	40 mm
Height	4 mm

Technical data

Version for	With continuous perforation 13 mm
Version for	Miscellaneous
Suitable for profile shapes	C profile
Hole size	13 mm
Material thickness	4 mm
With screw accessories	no
Rustproof steel, pickled	no