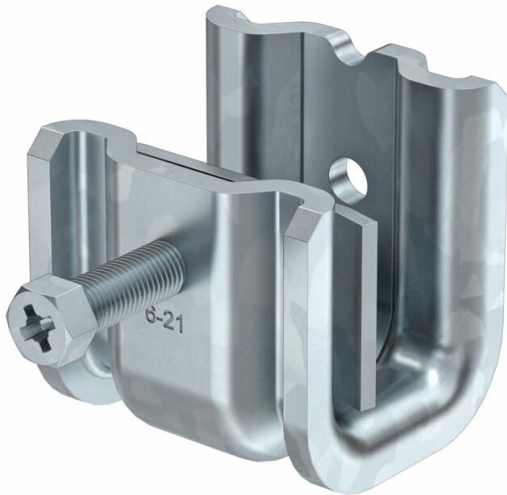


Technical data sheet

Beam clamp SSP 6-21, FT M6

Item number: 1486232



This type of beam clamp is pushed onto the support and fixed to the girder or flat iron using a pressure trough and bolt (M8). The hexagonal bolt has a WAF of 10 mm. In the clip element, two additional M6 threads are also incorporated, to fix threaded rods, for example.



St Steel

FT Hot-dip galvanised

Master data

Item number	1486232
Type	SSP 6-21 M6 FT
Description 1	Beam clamp
Description 2	heavyweight design
Manufacturer	OBO
Dimension	6-21mm
Material	Steel
Surface	Hot-dip galvanised
Surface standard	DIN EN ISO 1461
Smallest sales unit	25
Unit of quantity	Piece
Weight	23.9 kg
Weight unit	kg/100 pc.
CO2 Footprint (GWP) Cradle-to-Gate	0,4987 kg CO2e / 1 Piece

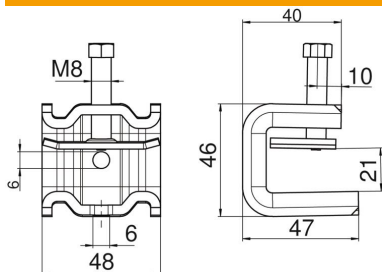
Technical data sheet

Beam clamp SSP 6-21, FT M6

Item number: 1486232



Dimensions



Dimension B	48 mm
Dimension H	46 mm
Dimension L	47 mm

Technical data

Connection type/component	Thread
Fastening type	Clamp
Breaking load F1	1.75 kN
Breaking load F2	1.5 kN
Flange thickness F max.	21 mm
Flange thickness F min.	6 mm
Suitable for metric threaded rod	6
Thread	M8
Thread metric	8
Hinge, adjustable	no
Hinged	no