

Technical data sheet

Junction box T350, closed, transparent elevated cover

Item number: 2007778



Closed junction box for the connection of cables and lines indoors and in protected outdoor areas. Rectangular design without entries. Suitable for wall and ceiling mounting, on mounting panels and threads in the floor. With the option to fasten inside and to mount via the corner domes. High, transparent cover with quick lock, sealable. Made from halogen-free and UV-stabilized materials.

With hat profile rail.

Junction box according to DIN EN 60670. Flame-resistant to DIN EN 60695/2/11, test temperature 650 °C. Impact resistance IK05 according to DIN EN 50102. Clear internal dimensions: 267x182x127 mm



PP/PC Polypropylene / polycarbonate

Master data

| | |
|------------------------------------|-------------------------------|
| Item number | 2007778 |
| Type | T 350 OE HD TR |
| Description 1 | Junction box, closed |
| Description 2 | with high transparent cover |
| Manufacturer | OBO |
| Dimension | 285x201x139 |
| Colour | Light grey; RAL 7035 |
| Material | Polypropylene / polycarbonate |
| Smallest sales unit | 1 |
| Unit of quantity | Piece |
| Weight | 68.66 kg |
| Weight unit | kg/100 pc. |
| CO2 Footprint (GWP) Cradle-to-Gate | 3,1446 kg CO2e / 1 Piece |

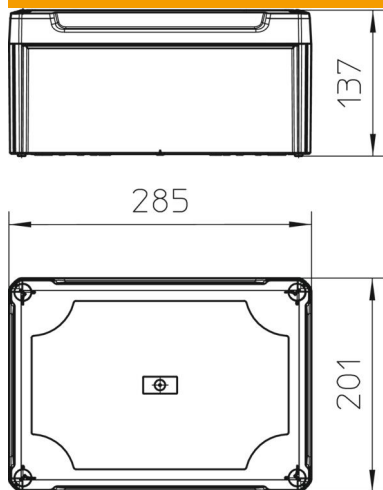
Technical data sheet

Junction box T350, closed, transparent elevated cover



Item number: 2007778

Dimensions



| | |
|--------|--------|
| Length | 285 mm |
| Width | 201 mm |
| Height | 137 mm |

Technical data

| | |
|-----------------------------------|--|
| Expandable | yes |
| Type of entry | None |
| Type of entry | Cable |
| Type of housing penetration | Without |
| Measured insulation voltage V_i | 500 V |
| Equipment | Support rail |
| Cover | Transparent |
| Cover fastening | Screwed |
| Entry from rear | yes |
| Entries | None |
| Explosion-tested version | no |
| Flame-resistant | Acc. to VDE 0471/DIN 695 Part 2-1, test temperature 750 °C |
| Shape | Rectangular |
| Maintain electrical functions | Without |
| For Ex zone | Without |
| For Ex zone gas | Without |
| For Ex zone dust | Without |
| Fibre-glass reinforced | yes |
| Halogen-free | yes |
| Clear internal dimensions | 267x182x127 mm |
| With screening | no |
| with lid | yes |
| Mounting type | Wall/ceiling mounting |
| Nominal cross-section, min. | 35 mm ² |
| Nominal voltage | 500 V |
| Sealable | yes |
| Protection rating | IP66 |
| Protection rating IK code | IK05. |
| Permitted temperature range, max. | 60 °C |
| Permitted temperature range, min. | -5 °C |

Technical data sheet

Junction box T350, closed, transparent elevated cover

Item number: 2007778



Technical data

| | |
|-----------------|-----|
| Transparent lid | yes |
| Weatherproof | no |