

# Technical data sheet

Flat cable threaded connection, PG thread Pg 16, stone grey

Item number: 2012758



Flat-cable entry, choke-nipple design with PG connecting thread to DIN 40430, protection rating IP31, with pre-mounted support sealing ring 107/F.



PE Polyethylene

## Master data

Item number	2012758
Type	106 FL 16 8 19
Description 1	Flat cable threaded connection
Manufacturer	OBO
Dimension	PG16
Colour	Stone grey; RAL 7030
Material	Polyethylene
Smallest sales unit	50
Unit of quantity	Piece
Weight	1.006 kg
Weight unit	kg/100 pc.
CO2 Footprint (GWP) Cradle-to-Gate	0,0451 kg CO2e / 1 Piece

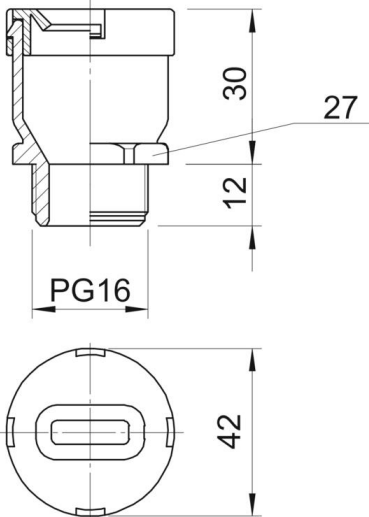
# Technical data sheet

Flat cable threaded connection, PG thread Pg 16, stone grey

Item number: 2012758



## Dimensions



Dimension D	32.5 mm
Dimension G	PG16 mm
Dimension L	42 mm
Dimension L1	12 mm
Dimension L2	30 mm

## Technical data

Type of seal	Sealing ring
Version for	Straight
Bend protection	no
Flat cable/width, max.	19 mm
Flat cable/width, min.	17 mm
Flat cables/thickness, max.	8 mm
Flat cables/thickness, min.	6 mm
Flat cable gland	yes
For Ex zone	Without
Thread	Pg 16
Thread type	PG
Fibre-glass reinforced	no
Sealing insert, multiple	no
With locknut	no
Impact-resistant	no
WAF	27
Protection rating	IP31
Strain relief option	no