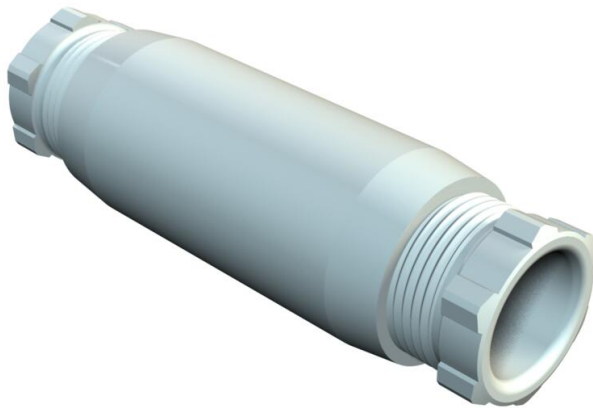


Technical data sheet

Cable connection sleeve

Item number: 2022028



Protection rating IP54, nominal voltage 660 V. VDE specifications state that connection sleeves are only intended for local routing.
117/2.5 VDE / PG 16: nominal cross-section 2.5 mm², with 5-pole terminal insert 2.5 mm² and cable entries with strain relief for cable diameter 9–14 mm.
117/6 VDE / PG 21: nominal cross-section 6 mm², with 5-pole terminal insert 6 mm² and cable entries with strain relief for cable diameter 12–18 mm.

117/2,5 VDE: Nennquerschnitt mm², mit 5poligem Klemmeinsatz 2,5 mm² und Kabeleinführungen mit Zugentlastung, Pg 16 für Kabeldurchmesser 9-14 mm
5-pole terminal insert 2.5 mm³



PS Polystyrene

Master data

Item number	2022028
Type	117 5x2.5
Description 1	Cable connection sleeve
Manufacturer	OBO
Dimension	2,5mm2
Colour	Light grey; RAL 7035
Material	Polystyrene
Smallest sales unit	10
Unit of quantity	Piece
Weight	4.891 kg
Weight unit	kg/100 pc.
CO2 Footprint (GWP) Cradle-to-Gate	0,1884 kg CO2e / 1 Piece

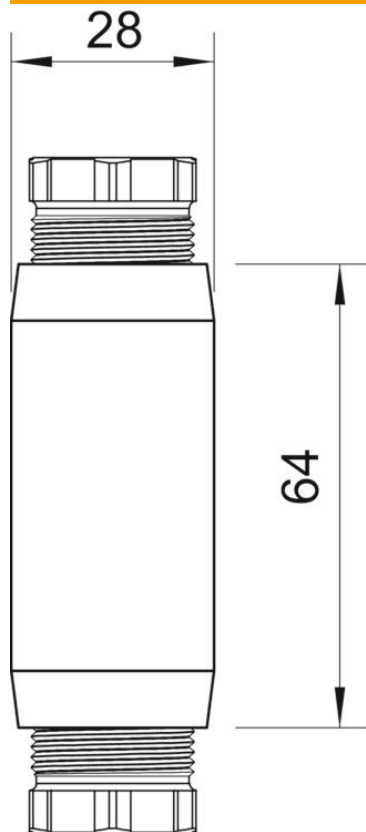
Technical data sheet

Cable connection sleeve

Item number: 2022028



Dimensions



Dimension D	28 mm
Dimension L	64 mm

Technical data

Entries	Pg 16
Halogen-free	yes
Nominal voltage	660 V
Impact-resistant	yes
Protection rating	IP54