

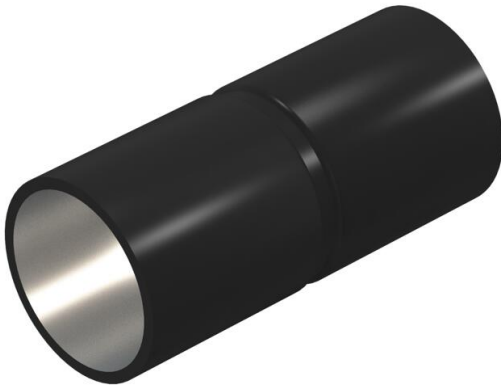
Technical data sheet

Armoured steel pipe connection sleeve without thread, black

Item number: 2046583



Accessory part: plug-in sleeve for the connections between electrical installation pipes. With burr-free inner wall.



- St** Steel
- PE50** PES50 - Polyester/epoxy

Master data

Item number	2046583
Type	SV20W SW
Description 1	Conduit plug-in coupler
Description 2	without thread
Manufacturer	OBO
Dimension	Ø20mm
Colour	Jet black; RAL 9005
Material	Steel
Surface	PES50 - Polyester/epoxy
Surface standard	
Smallest sales unit	50
Unit of quantity	Piece
Weight	3.2 kg
Weight unit	kg/100 pc.
CO2 Footprint (GWP) Cradle-to-Gate	0,092 kg CO2e / 1 Piece

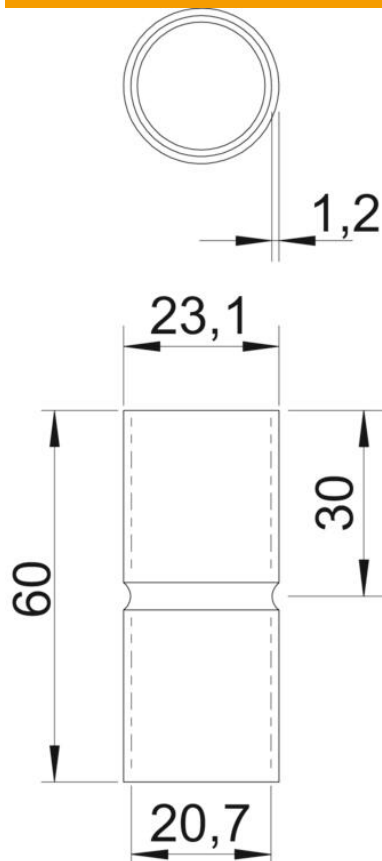
Technical data sheet

Armoured steel pipe connection sleeve without thread, black

Item number: 2046583



Dimensions



Length	60 mm
Dimension D	23.1 mm
Dimension d	20.7 mm
Dimension L	60 mm
Dimension l	30 mm
Dimension m (mm)	M20
Dimension t	1.2 mm

Technical data

Version for pipe diameter	20 mm
Size	20
Halogen-free	yes
With inspection opening and lid	no
Brushed surface	no
Polished surface	no
Permitted temperature range, max.	400 °C
Permitted temperature range, min.	-45 °C
Two-part	no