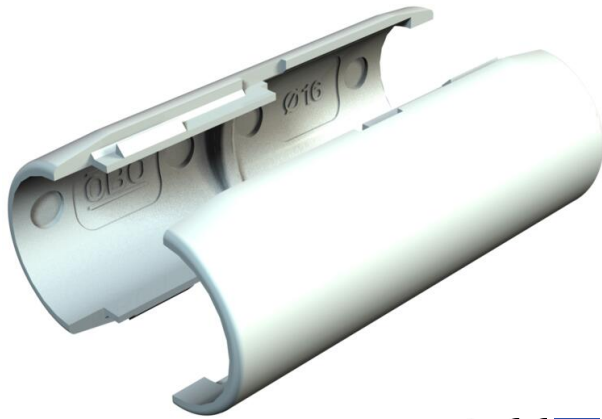


Technical data sheet

Quick pipe connecting sleeve, light grey

Item number: 2153831



Connection sleeve for plastic electrical installation pipes to create straight connections. Suitable for Quick pipe pipes or corrugated pipes. Toolless closing and opening. Can be used in a temperature range of -25 to +60 °C.



PVC Polyvinylchloride

Master data

Item number	2153831
Type	2953 M M20 LGR
Description 1	Quick pipe connecting sleeve
Manufacturer	OBO
Dimension	M20
Colour	Light grey; RAL 7035
Material	Polyvinylchloride
Smallest sales unit	10
Unit of quantity	Piece
Weight	1.015 kg
Weight unit	kg/100 pc.
CO2 Footprint (GWP) Cradle-to-Gate	0,047 kg COe / 1 Piece

Dimensions

Dimension B	25.5 mm
Dimension L	65 mm
Dimension R	10.1 mm

Technical data sheet

Quick pipe connecting sleeve, light grey

Item number: 2153831



Technical data

Thread	M20
Size	M20
Halogen-free	no
Polished surface	no
Permitted temperature range, max.	60 °C
Permitted temperature range, min.	0 °C