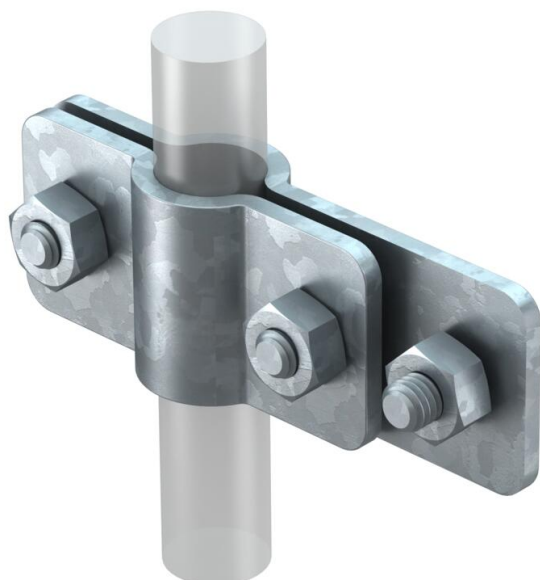


Technical data sheet

Connection clamp for earth rod on flat conductor FT



Item number: 5001412



- ST, BP, OMEX and LightEarth systems
- On flat conductors
- Including hex-head screw for attaching flat conductors



St Steel

FT Hot-dip galvanised

Master data

Item number	5001412
Type	2730 25 FT
Description 1	Connection clamp
Description 2	for OMEX earth rod
Manufacturer	OBO
Dimension	25mm
Material	Steel
Surface	Hot-dip galvanised
Surface standard	DIN EN ISO 1461
Smallest sales unit	5
Unit of quantity	Piece
Weight	38.8 kg
Weight unit	kg/100 pc.
CO2 Footprint (GWP) Cradle-to-Gate	0,8374 kg CO2e / 1 Piece

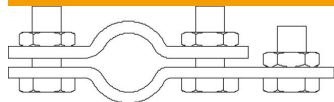
Technical data sheet

Connection clamp for earth rod on flat conductor FT

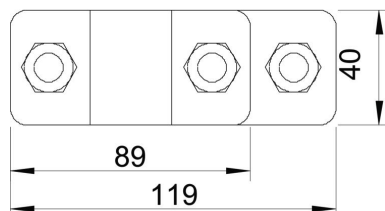


Item number: 5001412

Dimensions



Dimension A	89 mm
Dimension B	119 mm



Technical data

Type	Connection clip
Earthing connection diameter for earth rods	25 mm
Short-circuit current (50 HZ)(1 s; $\leq 300^{\circ}\text{C}$)	8.5 kA
Intermediate plate	no