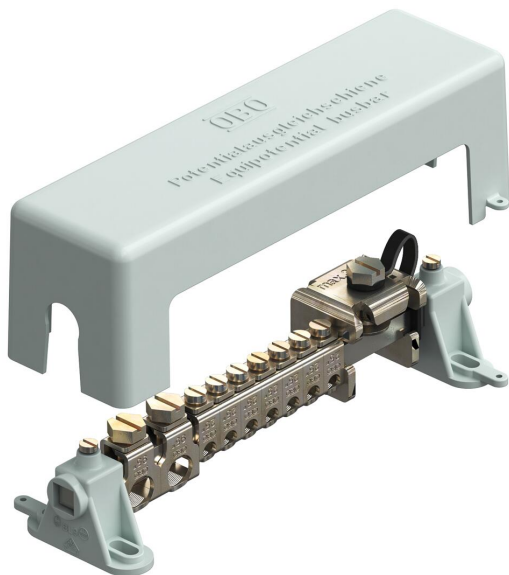


# Technical data sheet

## Equipotential busbar for indoors, VDE-tested

Item number: 5015650



Equipotential busbar for equipotential bonding to DIN VDE 0100-410/-540 as well as lightning protection equipotential bonding to DIN VDE 0185-305

- According to VDE 0618, Part 1
- With 10 x 10 mm clamping rail made of nickel-plated brass
- With contact-secure series terminals made of electrogalvanised steel
- Cover and rail stands made of grey polystyrene
- Sealable/labellable cover
- Lightning current carrying capacity 100 kA (10/350)
- Tension clamp with screw lock against self-loosening (e.g. required in industry)

Connection options:

- 7 single or multi-wire cables 2.5–25 mm<sup>2</sup> or fine-wire cables to 16 mm<sup>2</sup> (max. Ø 7 mm)
- 2 single or multi-wire cable 25–95 mm<sup>2</sup> or fine-wire cables to 70 mm<sup>2</sup> (max. Ø 13.5 mm)
- 1 flat conductor 30 x 3.5 mm

With sealable cover hood,  
made from impact-resistant plastic



CuZn  
37 Brass

### Master data

Item number	5015650
Type	1801 VDE
Description 1	Equipotential busbar
Manufacturer	OBO
Dimension	217mm
Colour	Grey
Material	Brass
Smallest sales unit	1
Unit of quantity	Piece
Weight	55 kg
Weight unit	kg/100 pc.
CO <sub>2</sub> Footprint (GWP) Cradle-to-Gate	1,778 kg CO <sub>2</sub> e / 1 Piece

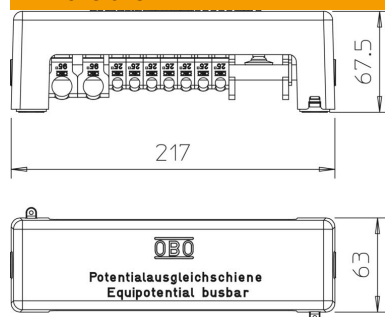
# Technical data sheet

## Equipotential busbar for indoors, VDE-tested

Item number: 5015650



### Dimensions



Length	217 mm
Width	63 mm
Height	67.5 mm

### Technical data

Quantity of flat conductor connections up to 30 mm	1
Quantity of flat conductor connections up to 40 mm	0
Quantity of cable connections up to 16 mm <sup>2</sup> , rigid	0
Quantity of cable connections up to 25 mm <sup>2</sup> , rigid	7
Quantity of cable connections up to 6 mm <sup>2</sup> , rigid	0
Quantity of cable connections up to 95 mm <sup>2</sup> , rigid	2
Quantity of round conductor connections 10 mm	0
Quantity of round conductor connections 8 mm	0
Quantity of round conductor connections 8-10 mm	0
Quantity of round conductor connections, total	0
Version for	With cover hood
Type	Modular structure
Insulator	yes
Surface of the terminal	Electrogalvanised
Surface of the contact rail	Nickel-plated
Material of the terminal	Steel
Material of the contact rail	Brass