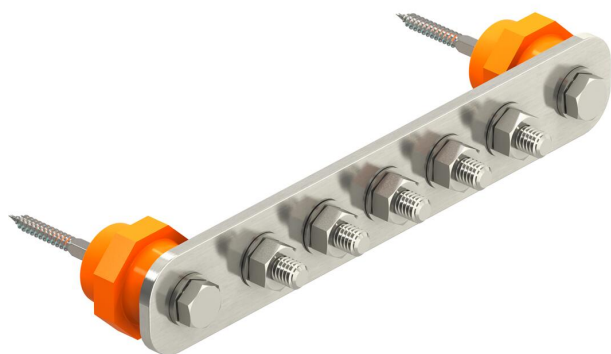


Technical data sheet

Equipotential busbar BigBar for industrial application



Item number: 5015854



- Main potential equalisation to VDE 0100 Part 410 and Part 540, and also lightning protection potential equalisation to VDE 0185-305 (IEC 62305)
- Insulation feet
- Quick, simple assembly of connection conductors to the contact rail using lock bolts M10
- The high-grade stainless steel versions (V2A) are suitable for outdoor use
- Complete with anchors and bolts for wall mounting
- With lock washer (DIN 137) for bolt locking against loosening (e.g. required in industry and Ex areas)



A2 Stainless steel

Master data

Item number	5015854
Type	1802 5 VA
Description 1	Equipotential busbar
Description 2	BigBar / 5 connections
Manufacturer	OBO
Dimension	5xM10
Material	Stainless steel 1.4301
Smallest sales unit	1
Unit of quantity	Piece
Weight	90 kg
Weight unit	kg/100 pc.
CO2 Footprint (GWP) Cradle-to-Gate	3,6271 kg CO2e / 1 Piece

Dimensions



Length	246 mm
Width	40 mm
Height	5 mm

Technical data sheet

Equipotential busbar BigBar for industrial application

Item number: 5015854



Technical data

Quantity of flat conductor connections up to 30 mm	0
Quantity of flat conductor connections up to 40 mm	0
Quantity of cable connections up to 16 mm ² , rigid	0
Quantity of cable connections up to 25 mm ² , rigid	0
Quantity of cable connections up to 6 mm ² , rigid	0
Quantity of cable connections up to 95 mm ² , rigid	0
Quantity of round conductor connections 10 mm	0
Quantity of round conductor connections 8 mm	0
Quantity of round conductor connections 8-10 mm	0
Quantity of round conductor connections, total	5
Number of connections	5
Version for	Only terminal
Type	Modular structure
Lightning current carrying capacity	H/100 kA
Insulator	yes
Material of the terminal	Rustproof steel (V2A)
Material of the contact rail	Rustproof steel (V2A)