

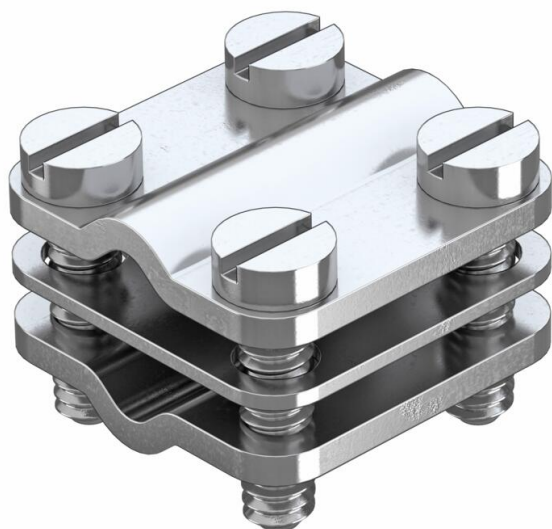
# Technical data sheet

## Clip branch terminal, parallel

Item number: 5064017



- Seat: 4–16 mm<sup>2</sup> x 4–16 mm<sup>2</sup>
- With 4 cylinder bolts M4 x 16



**CuZn** Brass  
37

**N** Nickel-plated

### Master data

Item number	5064017
Type	471 4-16 P
Description 1	Clip branch terminal
Description 2	parallel type
Manufacturer	OBO
Dimension	4-16mm <sup>2</sup>
Material	Brass
Surface	Nickel-plated
Surface standard	
Smallest sales unit	50
Unit of quantity	Piece
Weight	2.9 kg
Weight unit	kg/100 pc.
CO <sub>2</sub> Footprint (GWP) Cradle-to-Gate	0,1001 kg CO <sub>2</sub> e / 1 Piece

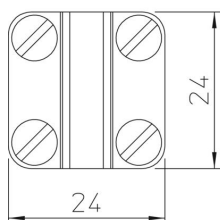
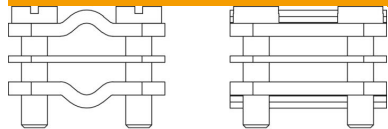
# Technical data sheet

Clip branch terminal, parallel

Item number: 5064017



## Dimensions



## Technical data

Suitable for

Round conductor