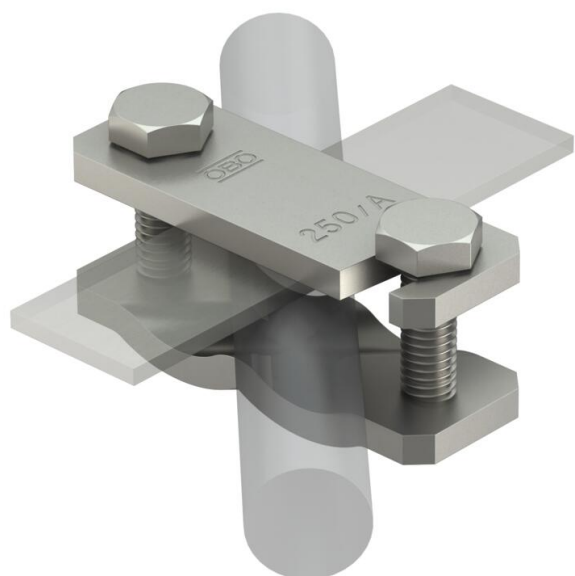


# Technical data sheet

## Diagonal clamp for flat conductors and round conductors A2

Item number: 5313023



- For reinforced steels  $\varnothing$  6–22 mm and flat conductors 50 x 4
- Mounted with bolts M10 x 40
- Simple mounting through open slot



**A2** Stainless steel

### Master data

Item number	5313023
Type	250 A-VA
Description 1	Diagonal clamp
Manufacturer	OBO
Dimension	88x30x45
Material	Stainless steel 1.4301
Smallest sales unit	10
Unit of quantity	Piece
Weight	21.2 kg
Weight unit	kg/100 pc.
CO2 Footprint (GWP) Cradle-to-Gate	1,1873 kg CO2e / 1 Piece

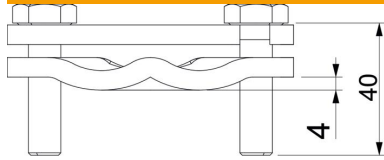
# Technical data sheet

## Diagonal clamp for flat conductors and round conductors A2

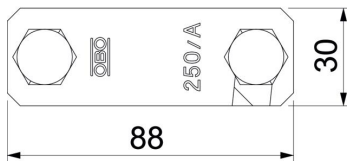
Item number: 5313023



### Dimensions



Dimension A	30 mm
Dimension B	88 mm
Dimension L	40 mm



### Technical data

Type of fastening screw	Hexagonal bolt
Type of connector	Connectors
Lightning current carrying capacity	H/100 kA
Flat conductor width, conductor 2, max.	50
Flat conductor width, conductor 2, min.	0
Suitable for connection	Miscellaneous
Fit	Rd 6-22/max. FL50 mm
Round conductor diameter, conductor 1, max.	22 mm
Round conductor diameter, conductor 1, min.	6 mm
Intermediate plate	no