

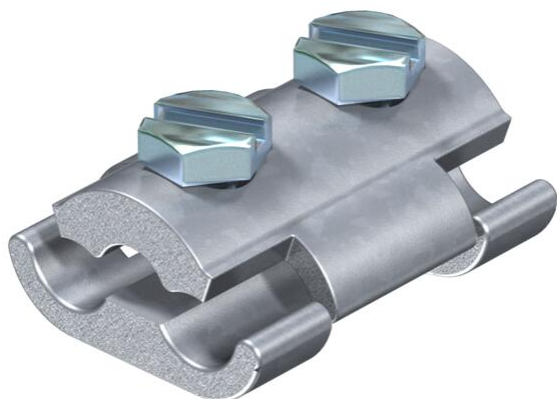
Technical data sheet

Parallel connector Rd 8–10 mm, M8 x 25

Item number: 5315506



- With two M8 x 25 hexagonal screws made of steel, zinc/nickel-coated



SG

cast steel

DN

Zinc / nickel coated

Master data

Item number	5315506
Type	259 8-10
Description 1	Parallel connector
Manufacturer	OBO
Dimension	8-10mm
Material	cast steel
Surface	Zinc / nickel coated
Surface standard	
Smallest sales unit	25
Unit of quantity	Piece
Weight	13.23 kg
Weight unit	kg/100 pc.
CO2 Footprint (GWP) Cradle-to-Gate	0,0597 kg CO2e / 1 Piece

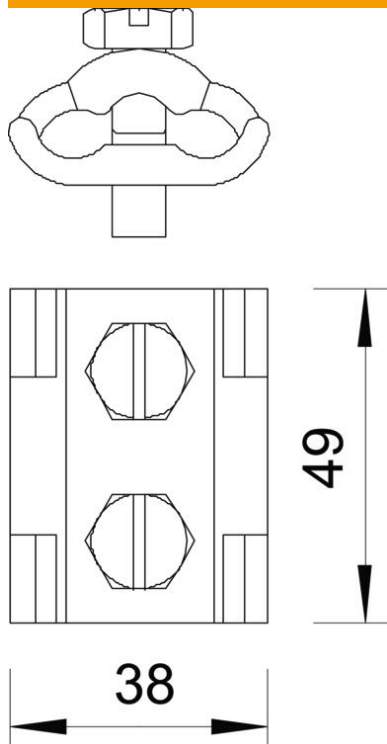
Technical data sheet

Parallel connector Rd 8–10 mm, M8 x 25

Item number: 5315506



Dimensions



Technical data

Type of fastening screw	Hexagonal bolt
Type of connector	Parallel connector
Lightning current carrying capacity	N/50 kA
Suitable for connection	Round conductor Rd 8–10 / Rd 8–10
Fit	Rd 8-10 mm
Round conductor diameter, conductor 1, max.	10 mm
Round conductor diameter, conductor 1, min.	8 mm
Round conductor diameter, conductor 2, max.	10 mm
Round conductor diameter, conductor 2, min.	8 mm
Intermediate plate	no