

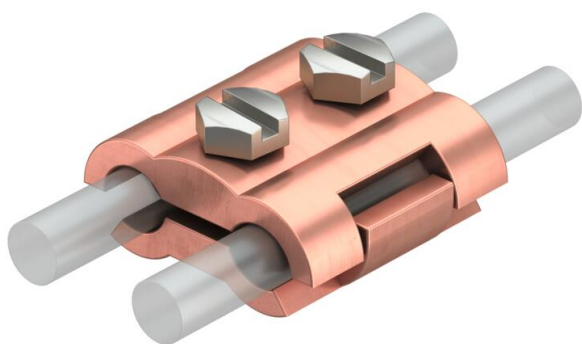
Technical data sheet

Parallel connector Rd 6–10 mm, M6 x 20

Item number: 5315654



- With 2 hexagonal bolts M6 x 20 made of stainless steel (V2A)



CuZn 37 Brass

Cu Copper-plated

Master data

Item number	5315654
Type	260 8-10 MS
Description 1	Parallel connector
Manufacturer	OBO
Dimension	8/8mm
Material	Brass
Surface	Copper-plated
Surface standard	
Smallest sales unit	50
Unit of quantity	Piece
Weight	15.82 kg
Weight unit	kg/100 pc.
CO2 Footprint (GWP) Cradle-to-Gate	0,0666 kg CO2e / 1 Piece

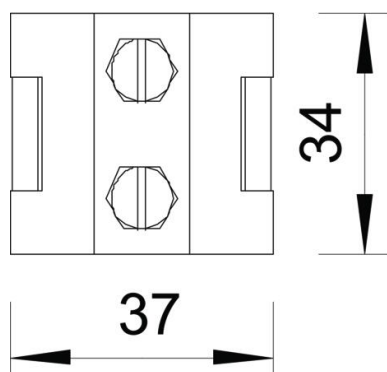
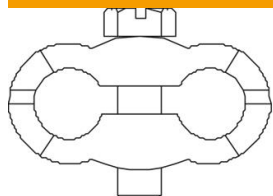
Technical data sheet

Parallel connector Rd 6–10 mm, M6 x 20

Item number: 5315654



Dimensions



Technical data

Type of fastening screw	Hexagonal bolt
Type of connector	Parallel connector
Lightning current carrying capacity	N/50 kA
Suitable for connection	Round conductor Rd 6–10 / Rd 6–10
Fit	Rd 6-10 mm
Round conductor diameter, conductor 1, max.	10 mm
Round conductor diameter, conductor 1, min.	6 mm
Round conductor diameter, conductor 2, max.	10 mm
Round conductor diameter, conductor 2, min.	6 mm
Intermediate plate	no