

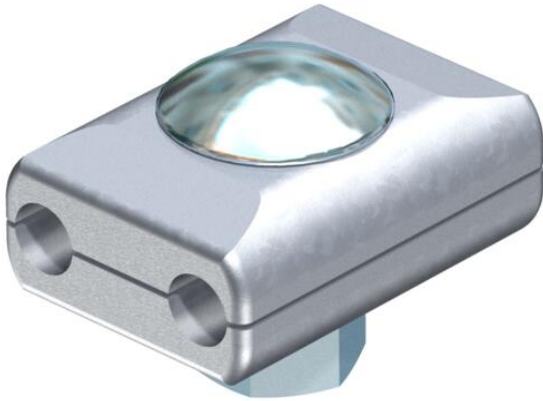
Technical data sheet

Parallel connector Rd 8 mm, M10 x 30

Item number: 5315700



- With flat, round bolt M10 x 30 and hexagonal nut, hot-dip galvanised steel



Zn Die-cast zinc

G Electrogalvanized

Master data

Item number	5315700
Type	260 8
Description 1	Parallel connector
Manufacturer	OBO
Dimension	8x8mm
Material	Die-cast zinc
Surface	Electrogalvanized
Surface standard	EN ISO 19598 / EN ISO 4042
Smallest sales unit	50
Unit of quantity	Piece
Weight	13.93 kg
Weight unit	kg/100 pc.
CO2 Footprint (GWP) Cradle-to-Gate	0,5314 kg CO2e / 1 Piece

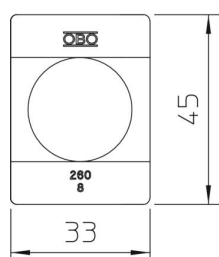
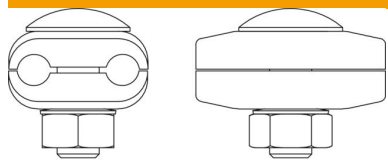
Technical data sheet

Parallel connector Rd 8 mm, M10 x 30

Item number: 5315700



Dimensions



Technical data

Type of fastening screw	Hexagonal bolt
Type of connector	Parallel connector
Lightning current carrying capacity	H/100 kA
Suitable for connection	Round conductor Rd 8 / Rd 8
Fit	Rd 8 mm
Round conductor diameter, conductor 1, max.	8 mm
Round conductor diameter, conductor 1, min.	8 mm
Round conductor diameter, conductor 2, max.	8 mm
Round conductor diameter, conductor 2, min.	8 mm
Intermediate plate	no