

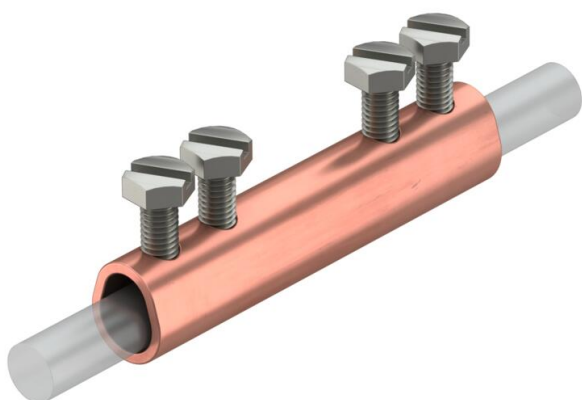
# Technical data sheet

## Straight connector Rd 6–10 mm Cu

Item number: 5328284



- With 4 hexagonal bolts M6 x 12
- Complies with the requirements of VDE 0185-305-3 (IEC/EN 62305-3)



**Cu** Copper

### Master data

Item number	5328284
Type	237 N CU
Description 1	Connection sleeve
Manufacturer	OBO
Dimension	6-10mm
Material	Copper
Smallest sales unit	10
Unit of quantity	Piece
Weight	8.76 kg
Weight unit	kg/100 pc.
CO2 Footprint (GWP) Cradle-to-Gate	0,2667 kg CO2e / 1 Piece

### Dimensions



# Technical data sheet

## Straight connector Rd 6–10 mm Cu

Item number: 5328284



### Technical data

Type of fastening screw	Hexagonal bolt
Type of connector	Connectors
Lightning current carrying capacity	H/100 kA
Suitable for connection	Miscellaneous
Fit	Rd 6-10 mm
Round conductor diameter, conductor 1, max.	10 mm
Round conductor diameter, conductor 1, min.	6 mm
Round conductor diameter, conductor 2, max.	10 mm
Round conductor diameter, conductor 2, min.	6 mm
Intermediate plate	no
Clamping range, max.	10 mm
Clamping range, min.	6 mm