

# Technical data sheet

Connection element for installation in the insulated interception rod isFang IN  
Item number: 5408019



- For the isCon® Basic and Professional cable
- Cable connection and routing in the insulated air-termination rod
- Screw-on termination
- Including heat-shrinkable sleeve and hexagonal wrench
- Tested to up to 150 kA (lightning protection class II)



**A2** Stainless steel

## Master data

Item number	5408019
Type	isCon IN con 2
Description 1	Connection element
Description 2	for isCon Basic + Pro internal
Manufacturer	OBO
Dimension	Ø20mm
Material	Stainless steel 1.4301
Smallest sales unit	1
Unit of quantity	Piece
Weight	27.8 kg
Weight unit	kg/100 pc.
CO2 Footprint (GWP) Cradle-to-Gate	1,3077 kg CO2e / 1 Piece

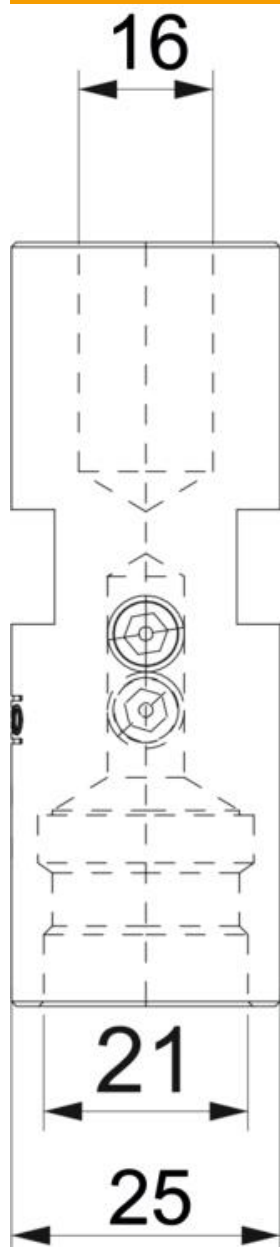
# Technical data sheet

Connection element for installation in the insulated interception rod isFang IN  
Item number: 5408019



## Dimensions

Dimension d min. | 28 mm



# Technical data sheet

Connection element for installation in the insulated interception rod isFang IN  
Item number: 5408019



## Technical data

Lightning current carrying capacity	H1/150 kA
Suitable for connection	Miscellaneous
Fit	20 mm