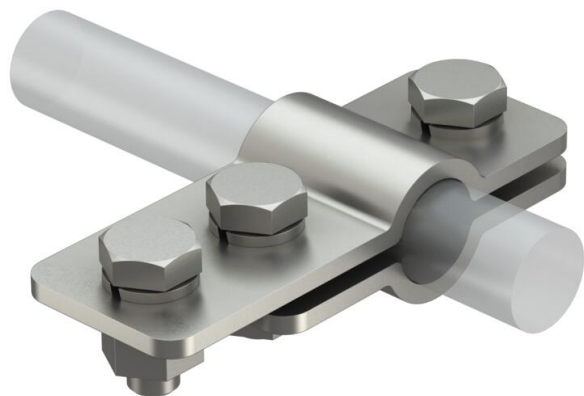


Technical data sheet

Potential connection

Item number: 5408036



Potential connection

- To avoid floating discharges on the isCon® conductor
- With sprung discs to protect screws against loosening



A2 Stainless steel

Master data

Item number	5408036
Type	isCon PAE
Description 1	Potential connection
Description 2	for isCon conductor
Manufacturer	OBO
Dimension	Ø17-25mm
Material	Stainless steel 1.4301
Smallest sales unit	2
Unit of quantity	Piece
Weight	36.5 kg
Weight unit	kg/100 pc.
CO2 Footprint (GWP) Cradle-to-Gate	1,8931 kg CO2e / 1 Piece

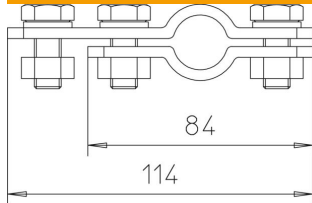
Technical data sheet

Potential connection

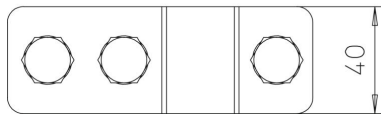
Item number: 5408036



Dimensions



Length	114 mm
Dimension B	40 mm
Dimension H	31.4 mm



Technical data

Connection	Round conductor
Type of accessory	Connection element
Fit	ø 17-25 mm
Accessories	yes
Spare part	no