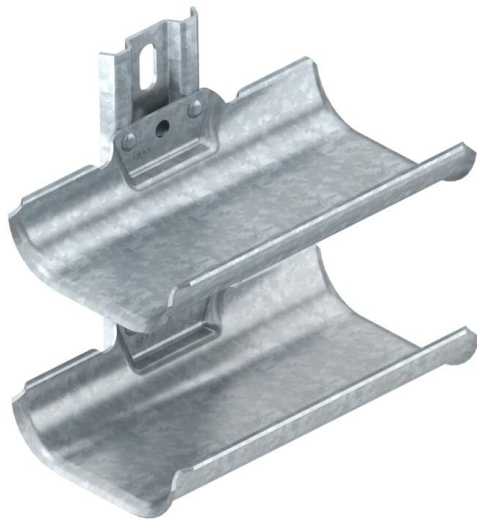


Technical data sheet

Cable carrier troughs, 2-fold, with mounting rail

Item number: 6006902



Cable support brackets for quick and easy routing of cables in areas where common cable support systems cannot be installed due to lack of space. The cable support brackets possess a large load-bearing surface as well as rounded outer edges to protect the cables. In accordance with DIN VDE 0298-300, a maximum support spacing of 0.8 m should not be exceeded.



- St** Steel
- FT** Hot-dip galvanised

Master data

Item number	6006902
Type	KTW 100 2 FT
Description 1	Cable support trough
Description 2	double
Manufacturer	OBO
Dimension	200x200x123
Colour	zinc
Material	Steel
Surface	Hot-dip galvanised
Surface standard	DIN EN ISO 1461
Smallest sales unit	1
Unit of quantity	Piece
Weight	111 kg
Weight unit	kg/100 pc.
CO2 Footprint (GWP) Cradle-to-Gate	3,1109 kg CO2e / 1 Piece

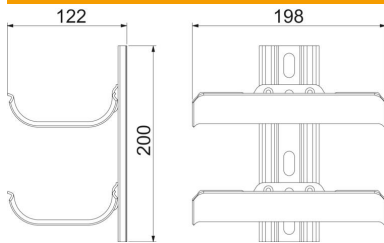
Technical data sheet

Cable carrier troughs, 2-fold, with mounting rail

Item number: 6006902



Dimensions



Length	198 mm
Width	122 mm
Height	200 mm
Plate thickness	2 mm
Dimension L	200 mm

Technical data

Number of troughs	2 St.
Version for	Multiple
F in kN per trough	0.5 kN
With fastening material	no
Adjustable	no