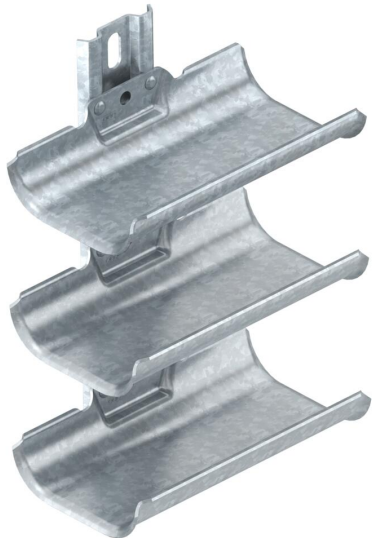


# Technical data sheet

## Cable carrier troughs, 3-fold, with mounting rail

Item number: 6006903



Cable support brackets for quick and easy routing of cables in areas where common cable support systems cannot be installed due to lack of space. The cable support brackets possess a large load-bearing surface as well as rounded outer edges to protect the cables. In accordance with DIN VDE 0298-300, a maximum support spacing of 0.8 m should not be exceeded.



- St** Steel
- FT** Hot-dip galvanised

### Master data

|                                    |                          |
|------------------------------------|--------------------------|
| Item number                        | 6006903                  |
| Type                               | KTW 100 3 FT             |
| Description 1                      | Cable support trough     |
| Description 2                      | triple                   |
| Manufacturer                       | OBO                      |
| Dimension                          | 300x200x123              |
| Colour                             | zinc                     |
| Material                           | Steel                    |
| Surface                            | Hot-dip galvanised       |
| Surface standard                   | DIN EN ISO 1461          |
| Smallest sales unit                | 1                        |
| Unit of quantity                   | Piece                    |
| Weight                             | 168 kg                   |
| Weight unit                        | kg/100 pc.               |
| CO2 Footprint (GWP) Cradle-to-Gate | 4,6475 kg CO2e / 1 Piece |

# Technical data sheet

## Cable carrier troughs, 3-fold, with mounting rail

Item number: 6006903



### Dimensions

|                 |        |
|-----------------|--------|
| Length          | 198 mm |
| Width           | 122 mm |
| Height          | 300 mm |
| Plate thickness | 2 mm   |
| Dimension L     | 300 mm |

### Technical data

|                         |          |
|-------------------------|----------|
| Number of troughs       | 3 St.    |
| Version for             | Multiple |
| F in kN per trough      | 0.5 kN   |
| With fastening material | no       |
| Adjustable              | no       |