

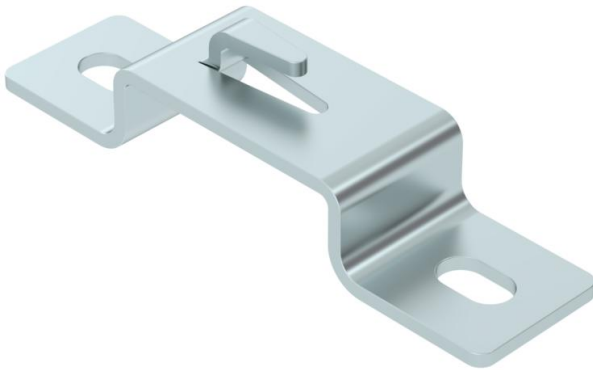
# Technical data sheet

## Stand-off bracket FS

Item number: 6015646



To erect mesh cable trays on the floor. Also usable as wall fixing.  
Screwless fastening of the mesh cable tray on the stand-off bracket.



- St** Steel
- FS** Strip galvanized

### Master data

Item number	6015646
Type	DBLG 20 050 FS
Description 1	Stand-off bracket
Description 2	for mesh cable tray
Manufacturer	OBO
Dimension	B50mm
Colour	zinc
Material	Steel
Surface	Strip galvanized
Surface standard	DIN EN 10346
Smallest sales unit	20
Unit of quantity	Piece
Weight	10.3 kg
Weight unit	kg/100 pc.
CO2 Footprint (GWP) Cradle-to-Gate	0,2412 kg CO2e / 1 Piece

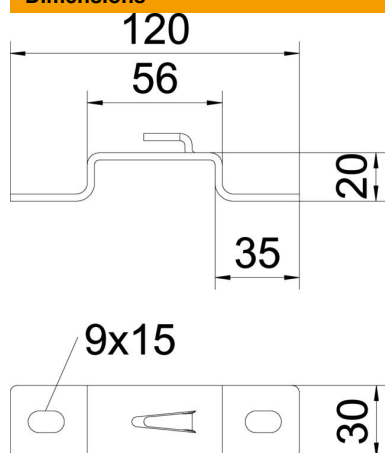
# Technical data sheet

## Stand-off bracket FS

Item number: 6015646



### Dimensions



Height	20 mm
Height	0.79 in
Dimension A	30 mm
Dimension B	56 mm
Dimension L	120 mm

### Technical data

Version for	Wall/ceiling clamp, trapezoidal profile
Suitable for mesh cable tray	yes
Suitable for cable ladder	no
Suitable for cable tray	no
Tray fastening	Retaining lug