

# Technical data sheet

## Hold-down clamp FT

Item number: 6016820



Hold-down clamp for fixing mesh cable trays to wall or support brackets.  
Including FRS M6 x 20 bolt with flange nut.



**St** Steel

**FT** Hot-dip galvanised

### Master data

|                                    |                          |
|------------------------------------|--------------------------|
| Item number                        | 6016820                  |
| Type                               | GKS 34 FT                |
| Description 1                      | Hold-down clamp          |
| Description 2                      | for mesh cable tray      |
| Manufacturer                       | OBO                      |
| Colour                             | zinc                     |
| Material                           | Steel                    |
| Surface                            | Hot-dip galvanised       |
| Surface standard                   | DIN EN ISO 1461          |
| Smallest sales unit                | 20                       |
| Unit of quantity                   | Piece                    |
| Weight                             | 2.021 kg                 |
| Weight unit                        | kg/100 pc.               |
| CO2 Footprint (GWP) Cradle-to-Gate | 0,0616 kg CO2e / 1 Piece |

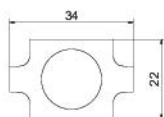
# Technical data sheet

## Hold-down clamp FT

Item number: 6016820



### Dimensions



|           |         |
|-----------|---------|
| Dimension | 34 x 22 |
|-----------|---------|

### Technical data

|                              |               |
|------------------------------|---------------|
| Suitable for mesh cable tray | yes           |
| Suitable for cable ladder    | no            |
| Suitable for cable tray      | no            |
| Rustproof steel, pickled     | no            |
| Connection type              | Miscellaneous |