

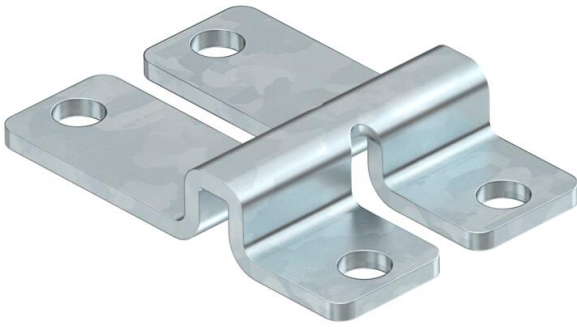
Technical data sheet

Wall clamp and central hanger FT

Item number: 6017160



Fastening component for direct mounting of mesh cable trays to the wall and floor. Can be screwed or riveted on.



CE

St Steel

FT Hot-dip galvanised

Master data

Item number	6017160
Type	WB GR FT
Description 1	Wall clamp and central hanger
Description 2	for cable tray to rivet/screw
Manufacturer	OBO
Dimension	47x32x9
Colour	zinc
Material	Steel
Surface	Hot-dip galvanised
Surface standard	DIN EN ISO 1461
Smallest sales unit	20
Unit of quantity	Piece
Weight	2.54 kg
Weight unit	kg/100 pc.
CO2 Footprint (GWP) Cradle-to-Gate	0,0843 kg CO2e / 1 Piece

Technical data sheet

Wall clamp and central hanger FT

Item number: 6017160

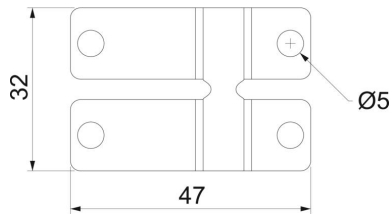


Dimensions



Dimension

47x32x9



Technical data

Version for	For wire thickness 6.0 mm
Maintain electrical functions	no
Suitable for mesh cable tray	yes
Suitable for cable ladder	no
Suitable for cable tray	no
Hole diameter	5 mm
With screw accessories	no
Rustproof steel, pickled	no