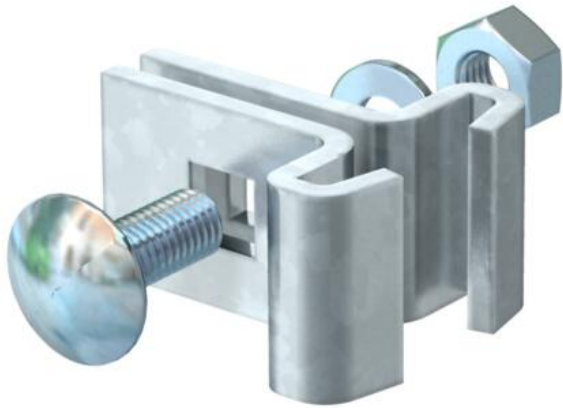


Technical data sheet

Support claw

Item number: 6018963



Support claw with truss-head bolt, type FRS M10 x 25 for mounting on the IS 8 support.
Can also be used in conjunction with the heavyweight ladder, type SLS 80.

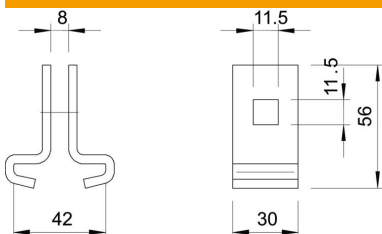


- St** Steel
- FT** Hot-dip galvanised

Master data

Item number	6018963
Type	TGK 30 42 FT
Description 1	Carrier claw
Description 2	for IS 8 support
Manufacturer	OBO
Dimension	56x30
Colour	zinc
Material	Steel
Surface	Hot-dip galvanised
Surface standard	DIN EN ISO 1461
Smallest sales unit	10
Unit of quantity	Piece
Weight	17 kg
Weight unit	kg/100 pc.
CO2 Footprint (GWP) Cradle-to-Gate	0,4518 kg CO2e / 1 Piece

Dimensions



Dimension	56 x 30
Length	56 mm
Width	30 mm
Height	42 mm