

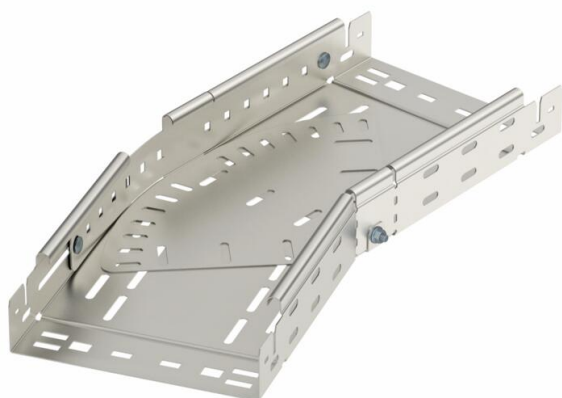
# Technical data sheet

## Magic bend, variable 60 A2

Item number: 6040528



Magic bend 0°–90°, variable, with quick connector system. For all cable tray types of 60 mm side height.



**A2** Stainless steel

**2B** Bright, treated

### Master data

Item number	6040528
Type	RBMV 640 A2
Description 1	Variable bend
Description 2	with quick connector
Manufacturer	OBO
Dimension	60x400
Material	Stainless steel 1.4301
Surface	Bright, treated
Surface standard	
Smallest sales unit	1
Unit of quantity	Piece
Weight	578 kg
Weight unit	kg/100 pc.

### Dimensions

Width	400 mm
Height	60 mm
Plate thickness	1.25 mm
Dimension B	400 mm
Dimension L	820 mm

# Technical data sheet

Magic bend, variable 60 A2

Item number: 6040528



## Technical data

Bend (angle)	Adjustable
Connector version	Integrated connector
Maintain electrical functions	no
Mounting perforation in base	yes
NATO hole pattern	no
Change of direction	Horizontal
Rustproof steel, pickled	no
Side perforation	yes
Wide-span version	no
Type of connector, cable support system	Click fastening