

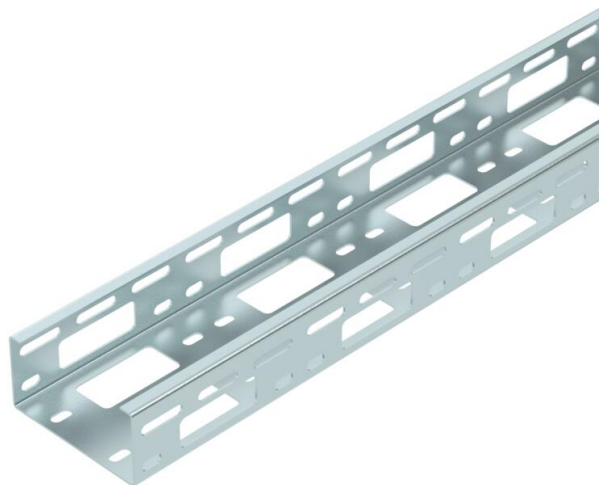
Technical data sheet

Luminaire support channel 100 FS

Item number: 6075024



Perforated luminaire support tray for cable routing and luminaire mounting.
Magnetic shield insulation without cover 20 dB, with cover 50 dB.



St Steel

FS Strip galvanized

Master data

Item number	6075024
Type	LTS 100 FS
Description 1	Luminaire support rail
Manufacturer	OBO
Dimension	50x100x6000
Colour	zinc
Material	Steel
Surface	Strip galvanized
Surface standard	DIN EN 10346
Smallest sales unit	6
Unit of quantity	Metre
Weight	176.933 kg
Weight unit	kg/100 m
CO2 Footprint (GWP) Cradle-to-Gate	5,5598 kg CO2e / 1 Meter

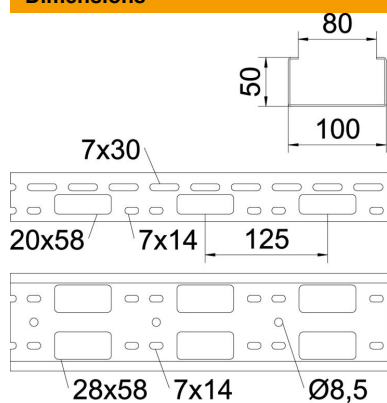
Technical data sheet

Luminaire support channel 100 FS

Item number: 6075024



Dimensions



Length	6,000 mm
Width	100 mm
Height	50 mm
Plate thickness	1.5 mm

Technical data

Connector version	Without connectors
Usable cross-section	46 cm ²

Loads

Support spacing 1.0 m	1.7 kN/m
Support spacing 1.5 m	1.5 kN/m
Support spacing 2.0 m	1 kN/m
Support spacing 2.5 m	0.6 kN/m
Support spacing 3.0 m	0.4 kN/m