

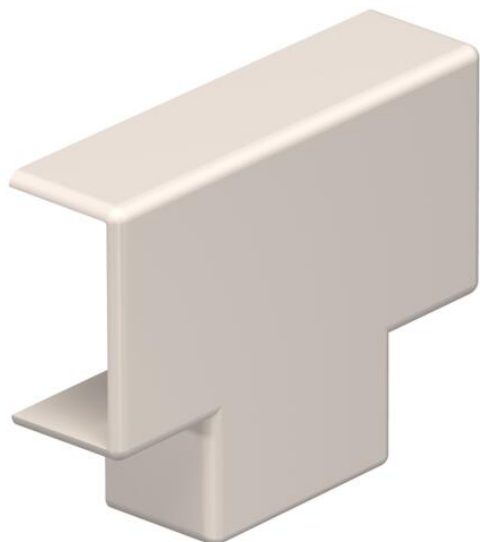
# Technical data sheet

T piece cover, for trunking type WDK 10020

Item number: 6152309



T piece hood for changing the direction of the WDK trunking.



**PVC** Polyvinylchloride

## Master data

|                                    |                          |
|------------------------------------|--------------------------|
| Item number                        | 6152309                  |
| Type                               | WDK HT10020CW            |
| Description 1                      | T piece hood             |
| Manufacturer                       | OBO                      |
| Dimension                          | 10x20mm                  |
| Colour                             | Cream; RAL 9001          |
| Material                           | Polyvinylchloride        |
| Smallest sales unit                | 4                        |
| Unit of quantity                   | Piece                    |
| Weight                             | 0.334 kg                 |
| Weight unit                        | kg/100 pc.               |
| CO2 Footprint (GWP) Cradle-to-Gate | 0,0158 kg CO2e / 1 Piece |

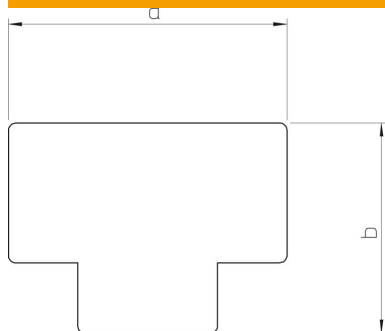
# Technical data sheet

T piece cover, for trunking type WDK 10020

Item number: 6152309



## Dimensions



|             |       |
|-------------|-------|
| Length      | 45 mm |
| Width       | 22 mm |
| Height      | 10 mm |
| Dimension a | 45 mm |
| Dimension b | 34 mm |
| Dimension H | 20 mm |

## Technical data

|                                   |              |
|-----------------------------------|--------------|
| Version for                       | Hood fitting |
| Fastening type                    | Lockable     |
| Maintain electrical functions     | no           |
| for duct dimension                | 10 x 20      |
| Halogen-free                      | no           |
| Trunking depth                    | 10 mm        |
| Protection rating                 | IP30         |
| Protective film                   | no           |
| Protection rating IK code         | IK04         |
| Permitted temperature range, max. | 60 °C        |
| Permitted temperature range, min. | -5 °C        |