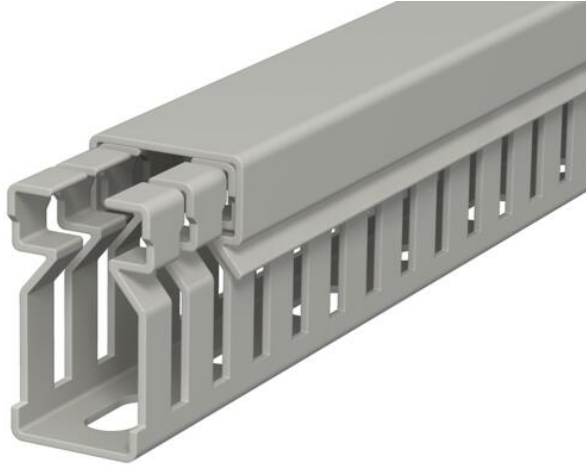


# Technical data sheet

## Wiring trunking, type LK4 30015

Item number: 6178003



Wiring duct, incl. cover and base perforation, for horizontal and vertical routing of electrical cables in the switchgear cabinet. Designed as a metric duct. The nominal dimension of the system size corresponds to the internal dimension of the duct. Retainers are broken out without tools. The flush-floor routing of cables is possible through predetermined break points. Tested to DIN EN 50085-2-3. Special lengths on request.



**PVC** Polyvinylchloride

### Master data

Item number	6178003
Type	LK4 30015
Description 1	Slotted cable trunking system
Manufacturer	OBO
Dimension	30x15x2000
Colour	Stone grey; RAL 7030
Material	Polyvinylchloride
Smallest sales unit	2
Unit of quantity	Metre
Weight	18 kg
Weight unit	kg/100 m
CO2 Footprint (GWP) Cradle-to-Gate	0,4455 kg CO2e / 1 Meter

# Technical data sheet

## Wiring trunking, type LK4 30015

Item number: 6178003



### Dimensions



Length	2,000 mm
Width	15 mm
Height	30 mm

### Technical data

Side wall version	Slotted
Fastening type	Base perforation
Flexible	no
Halogen-free	no
Creepage current-resistant	yes
With cover	yes
Usable cross-section	4.06 cm <sup>2</sup>
Slot spacing	10 mm
Slot width	4 mm
Self-extinguishing	yes
Permitted temperature range, max.	60 °C
Permitted temperature range, min.	-5 °C