

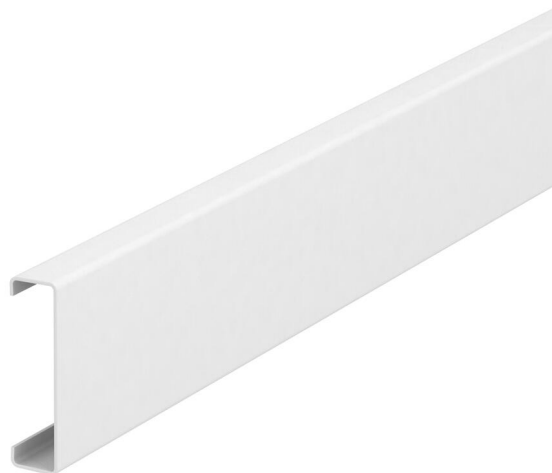
# Technical data sheet

## Sheet steel trunking cover, 50 mm system opening

Item number: 6279880



Sheet steel cover for closing the GS device installation trunking.  
Sheet steel version.



St Steel

### Master data

Item number	6279880
Type	GS-OT50RW
Description 1	Cover
Description 2	for system opening 50
Manufacturer	OBO
Dimension	12x45x2000
Colour	Pure white; RAL 9010
Material	Steel
Smallest sales unit	2
Unit of quantity	Metre
Weight	45.55 kg
Weight unit	kg/100 m
CO2 Footprint (GWP) Cradle-to-Gate	1,0607 kg CO2e / 1 Meter

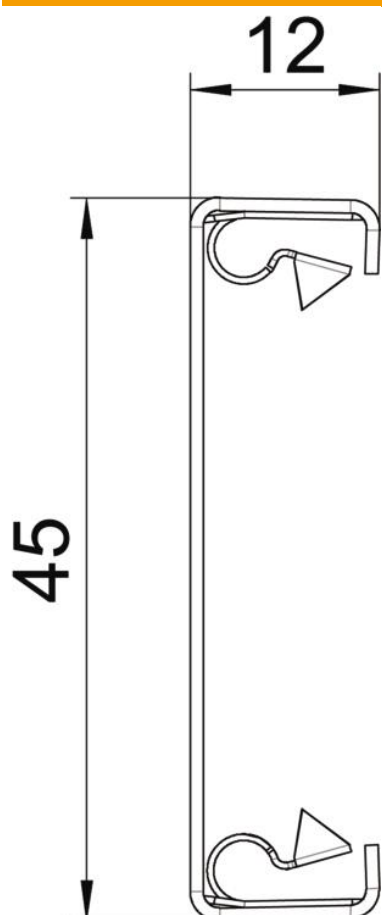
# Technical data sheet

## Sheet steel trunking cover, 50 mm system opening

Item number: 6279880



### Dimensions



Length	2,000 mm
Width	45 mm
Height	12 mm

### Technical data

Version for	Smooth
Halogen-free	yes
Cover mounting type	Internal
Protection rating	IP30
Protective film	yes
Protection rating IK code	IK10
Permitted temperature range, max.	60 °C
Permitted temperature range, min.	-25 °C