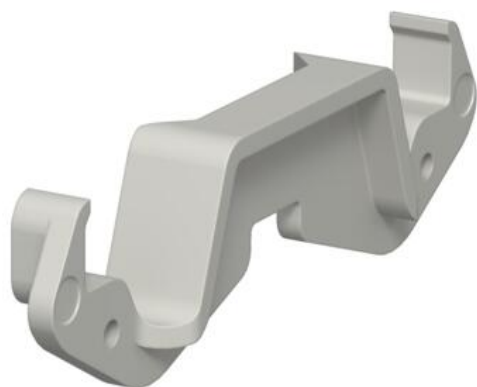


Technical data sheet

Duct clamp KL80A

Item number: 6288640



Duct clamp for holding cables securely and for fastening the partition in Rapid 80 GK, GS and GA device installation trunking systems as well as in ISS service poles with a 76.5 mm system opening.



Polycarbonate/Acrylnitrile-butadiene-styrene

Master data

Item number	6288640
Type	KL80A
Description 1	Trunking clamp
Description 2	for system opening 80
Manufacturer	OBO
Dimension	94x25x12
Colour	Light grey; RAL 7035
Material	Polycarbonate/Acrylnitrile-butadiene-styrene
Smallest sales unit	20
Unit of quantity	Piece
Weight	0.685 kg
Weight unit	kg/100 pc.
CO2 Footprint (GWP) Cradle-to-Gate	0,046 kg CO2e / 1 Piece

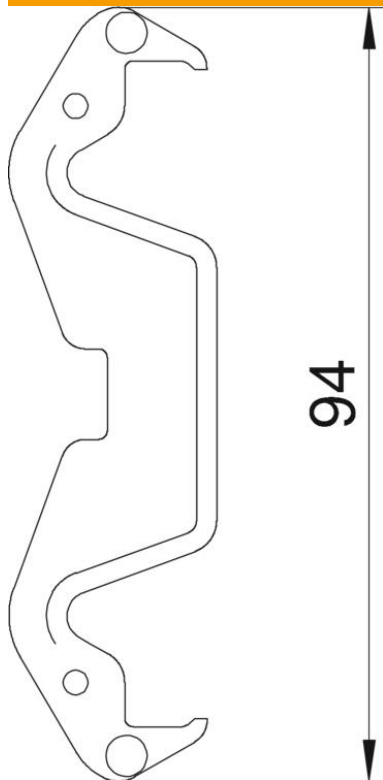
Technical data sheet

Duct clamp KL80A

Item number: 6288640



Dimensions



Technical data

Halogen-free	yes
Cover width	76.5 mm