

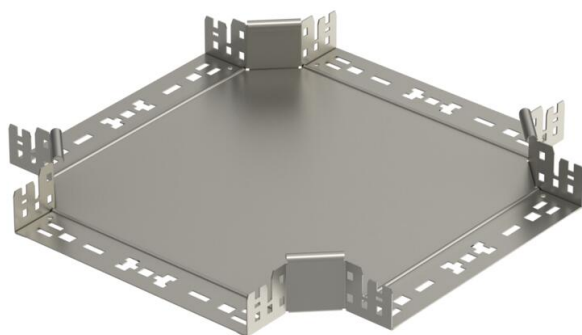
Technical data sheet

Magic cross-over 60 A2

Item number: 7027047



Cross-over with quick connector system. For all cable tray types of 60 mm side height.



A2 Stainless steel

2B Bright, treated

Master data

Item number	7027047
Type	RKM 630 A2
Description 1	Cross over
Description 2	with quick connector
Manufacturer	OBO
Dimension	60x300
Material	Stainless steel 1.4301
Surface	Bright, treated
Surface standard	
Smallest sales unit	1
Unit of quantity	Piece
Weight	244.6 kg
Weight unit	kg/100 pc.

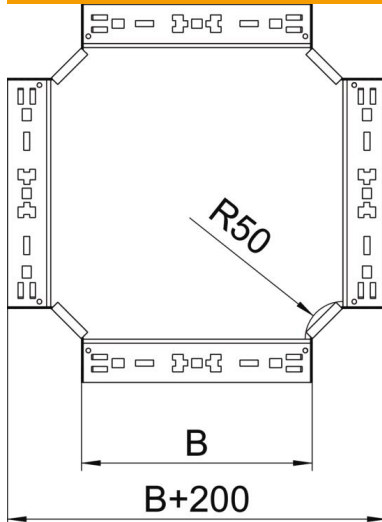
Technical data sheet

Magic cross-over 60 A2

Item number: 7027047



Dimensions



Width	300 mm
Height	60 mm
Plate thickness	1.25 mm
Dimension B	300 mm

Technical data

Bend (angle)	90°
Maintain electrical functions	no
Material thickness, floor plate	1.25 mm
NATO hole pattern	no
Change of direction	Horizontal
Rustproof steel, pickled	no
Wide-span version	no
Type of connector, cable support system	Click fastening
Rail thickness	1.25 mm